

Illuminating Gravitational Waves: A Concordant Picture of Photons from a Neutron Star Merger

M. M. Kalila^{1*}, E. Nakar², L. P. Singer^{3,4}, D. L. Kaplan⁵,
D. O. Cook¹, A. Van Sistine⁵, R. M. Lau¹, C. Fremling¹,
O. Gottlieb², J. E. Jencson¹, S.M. Adams¹, U. Feindt⁶, K.
Hotokezaka⁷, S. Ghosh⁵, D. A. Perley⁸, P.-C. Yu⁹, T. Piran¹⁰,
J. R. Allison^{11,12}, G. C. Anupama¹³, A. Balasubramanian¹⁴,
K. W. Bannister¹⁵, J. Bally¹⁶, J. Barnes¹⁷, S. Barway¹⁸, E.
Bellm¹⁹, V. Bhalerao²⁰, D. Bhattacharya²¹, N. Blagorodnova¹,
J. S. Bloom^{22,23}, P. R. Brady⁵, C. Cannella¹, D. Chatterjee⁵,
S. B. Cenko^{3,4}, B. E. Cobb²⁴, C. Copperwheat⁸, A. Corsi²⁵,
K. De¹, D. Dobie^{11,26,15}, S. W. K. Emery²⁷, P. A. Evans²⁸,
O. D. Fox²⁹, D. A. Frail³⁰, C. Frohmaier^{31,32}, A. Goobar⁶,
G. Hallinan¹, F. Harrison¹, G. Helou³³, T. Hinderer³⁴,
A. Y. Q. Ho¹, A. Horesh⁴, W.-H. Ip⁹, R. Itoh³⁵, D. Kasen^{22,36},
H. Kim³⁷, N.P.M. Kuin²⁷, T. Kupfer¹, C. Lynch^{11,26},
K. Madsen¹, P. A. Mazzali^{8,38}, A. A. Miller^{39,40}, K. Mooley⁴¹,
T. Murphy^{11,26}, C.-C. Ngeow⁹, D. Nichols³⁴, S. Nissanke³⁴,
P. Nugent^{22,23}, E. O. Ofek⁴², H. Qi⁵, R. M. Quimby^{43,44},
S. Rosswog⁴⁵, F. Rusu⁴⁶, E. M. Sadler^{11,26}, P. Schmidt³⁴,
J. Sollerman⁴⁵, I. Steele⁸, A. R. Williamson³⁴, Y. Xu¹, L.
Yan^{1,33}, Y. Yatsu³⁵, C. Zhang⁵, W. Zhao⁴⁶

¹Division of Physics, Math and Astronomy, California Institute of Technology,
1200 East California Boulevard, Pasadena, CA 91125, USA

²The Raymond and Beverly Sackler School of Physics and Astronomy,
Tel Aviv University, Tel Aviv 69978, Israel

³Astroparticle Physics Laboratory, NASA Goddard Space Flight Center,

Mail Code 661, Greenbelt, MD 20771, USA

⁴Joint Space-Science Institute, University of Maryland, College Park, MD 20742, USA

*To whom correspondence should be addressed; E-mail: mansi@astro.caltech.edu. ⁵Department of Physics, University of Wisconsin, Milwaukee, WI 53201, USA

⁶The Oskar Klein Centre, Department of Physics, Stockholm University, AlbaNova, SE-106 91 Stockholm, Sweden

⁷Center for Computational Astrophysics, Simons Foundation, 162 5th Ave, New York, 10010, NY, USA

⁸Astrophysics Research Institute, Liverpool John Moores University, IC2, Liverpool Science Park, 146 Browlow Hill, Liverpool, L3 5RF, UK

⁹Graduate Institute of Astronomy, National Central University, No. 300, Zhongda Rd., Zhongli Dist., Taoyuan City 32001, Taiwan

¹⁰Racah Institute of Physics, The Hebrew University of Jerusalem, Jerusalem, 91904, Israel

¹¹Sydney Institute for Astronomy, School of Physics A28, The University of Sydney, NSW 2006, Australia

¹²ARC Centre of Excellence for All-sky Astrophysics in 3 Dimensions (ASTRO 3D)

¹³Indian Institute of Astrophysics, II Block Koramangala, Bangalore-560034, India

¹⁴Indian Institute of Science Education and Research, Dr. Homi Bhabha Road, Pashan, Pune 411008, India

¹⁵Australia Telescope National Facility, Commonwealth Scientific and Industrial Research Organisation, Astronomy and Space Science, PO Box 76, Epping, NSW 1710, Australia

¹⁶University of Colorado, Boulder, USA

¹⁷Columbia Astrophysics Laboratory, Columbia University, New York, NY, 10027, USA

¹⁸South African Astronomical Observatory (SAAO), P.O. Box 9, Observatory, Cape Town 7935, South Africa

¹⁹Department of Astronomy, University of Washington, Seattle, WA 98195

²⁰Department of Physics, Indian Institute of Technology Bombay, Mumbai 400076, India

²¹Inter-University Centre for Astronomy and Astrophysics, P. O. Bag 4, Ganeshkhind, Pune 411007, India

²²Department of Astronomy, University of California, Berkeley, CA 94720-3411, USA

²³Lawrence Berkeley National Laboratory, 1 Cyclotron Road, MS 50B-4206, Berkeley, CA 94720, USA

²⁴Department of Physics, George Washington University, Washington, DC 20052, USA

²⁵Department of Physics and Astronomy, Texas Tech University, Box 41051, Lubbock, TX 79409-1051, USA

²⁶Australian Research Council Centre of Excellence for All-sky Astrophysics (CAASTRO),

²⁷University College London, Mullard Space Science Laboratory,
Holmbury St. Mary, Dorking, RH5 6NT, U.K.

²⁸University of Leicester, X-ray and Observational Astronomy Research Group
Leicester Institute for Space and Earth Observation, Department of Physics& Astronomy,
University Road, Leicester, LE1 7RH, UK ²⁹Space Telescope Science Institute, 3700 San Mar-
tin Dr, Baltimore, MD 21218

³⁰National Radio Astronomy Observatory, Socorro, New Mexico, USA

³¹Department of Physics and Astronomy, University of Southampton,
Southampton, Hampshire SO17 1BJ, UK

³²Institute of Cosmology and Gravitation, Dennis Sciama Building,
University of Portsmouth, Burnaby Road, Portsmouth PO1 3FX, UK

³³Infrared Processing and Analysis Center, California Institute of Technology, Pasadena, CA
91125, USA

³⁴Institute of Mathematics, Astrophysics and Particle Physics,
Radboud University, Heyendaalseweg 135, 6525 AJ Nijmegen, The Netherlands

³⁵Department of Physics, Tokyo Institute of Technology,
2-12-1 Ookayama, Meguro-ku, Tokyo 152-8551, Japan

³⁶Department of Physics, University of California, Berkeley, CA 94720, USA

³⁷Gemini Observatory, Casilla 603, La Serena, Chile

³⁸Max-Planck Institute for Astrophysics, Garching, Germany

³⁹Center for Interdisciplinary Exploration and Research in Astrophysics (CIERA)
and Department of Physics and Astronomy, Northwestern University, Evanston, IL 60208, USA

⁴⁰The Adler Planetarium, Chicago, IL 60605, USA

⁴¹Astrophysics, Department of Physics, University of Oxford,
Keble Road, Oxford OX1 3RH, UK

⁴²Department of Particle Physics & Astrophysics, Weizmann Institute of Science,
Rehovot 7610001, Israel

⁴³Department of Astronomy, San Diego State University, CA92182, USA

⁴⁴Kavli Institute for the Physics and Mathematics of the Universe (WPI), The University of
Tokyo Institutes for Advanced Study, The University of Tokyo,
Kashiwa, Chiba 277-8583, Japan

⁴⁵The Oskar Klein Centre, Department of Astronomy, Stockholm University,
AlbaNova, SE-106 91 Stockholm, Sweden

⁴⁶University of California Merced, USA

*To whom correspondence should be addressed; E-mail: mansi@astro.caltech.edu.

Merging neutron stars offer an exquisite laboratory for simultaneously studying strong-field gravity and matter in extreme environments. We establish the physical association of an electromagnetic counterpart (EM170817) to gravitational waves (GW170817) detected from merging neutron stars. By synthesizing a panchromatic dataset, we demonstrate that merging neutron stars are a long-sought production site forging heavy elements by r-process nucleosynthesis. The weak gamma-rays seen in EM170817 are dissimilar to classical short gamma-ray bursts with ultra-relativistic jets. Instead, we suggest that breakout of a wide-angle, mildly-relativistic cocoon engulfing the jet elegantly explains the low-luminosity gamma-rays, the high-luminosity ultraviolet-optical-infrared and the delayed radio/X-ray emission. We posit that all merging neutron stars may lead to a wide-angle cocoon breakout; sometimes accompanied by a successful jet and sometimes a choked jet.

On 2017 August 17 at 12:41:04 UTC, gravitational waves from the merger of two neutron stars (NS-NS) were detected by the Laser Interferometer Gravitational-Wave Observatory (LIGO) and dubbed GW170817 (1). Two seconds later, the first temporally-coincident photons were detected as γ -rays by the *Fermi* satellite (2–4). GW170817 was such a loud event that the joint on-sky localization from the LIGO and Virgo interferometers was only 31 square degrees (Figure 1) with an initial distance estimate of 40 ± 8 Megaparsec (5). To identify potential host galaxies (6), we cross-matched to our Census of the Local Universe (CLU; (7)) galaxy catalog and found only 49 galaxies in this volume (8). To prioritize follow-up, we ranked the galaxies by stellar mass (see Table S1 and supplementary online text (8)). A multitude of telescopes promptly began multi-wavelength searches for an electromagnetic counterpart in and around these galaxies. Half a day later, a bright optical transient was identified and announced by the Swope telescope team at Las Campanas Observatory (9, 10) in the 3rd ranked galaxy in our

list, named NGC 4993. This source, SSS 17a, is located at right ascension $13^{\text{h}}09^{\text{m}}48.071^{\text{s}}$ and declination $-23^{\text{d}}22^{\text{m}}53.37^{\text{s}}$ (J2000 equinox, (8)), with a projected offset from the nucleus of NGC 4993 of 2.2 kiloparsec and away from any sites of star formation (Figure S1; (8)). We also detect this transient in the infrared and ultraviolet wavelengths (see companion paper; (11)). Nine days later, an X-ray counterpart was identified (12). Fifteen days later, a radio counterpart was identified (see companion paper; (13)).

Initially, the bright luminosity and the blue, featureless optical spectrum of SSS17a appeared to be consistent with a young supernova explosion that should brighten (see Figure S2, Figure S3). However, on the second night, the source faded substantially in the optical and brightened in the infrared (Figure 4). Combining ultraviolet-optical-infrared (UVOIR) data from 24 telescopes on 7 continents, we constructed a bolometric light curve (Figure 2; see (8) for details). The bolometric luminosity evolves from $10^{42} \text{ erg s}^{-1}$ at 0.5 d to $3 \times 10^{40} \text{ erg s}^{-1}$ at 10 d (Figure 2). By estimating the black-body effective temperature evolution, we find that the source rapidly cools from $\approx 11000 \text{ K}$ to $\approx 5000 \text{ K}$ in a day to $\approx 1400 \text{ K}$ in ten days. The inferred photospheric expansion velocities span $0.3c$ to $0.1c$, where c is the speed of light (8). Furthermore, infrared spectroscopy shows broad features that are unlike any other transient seen before (Figure 3, Figure S4, Figure S5). The combination of high velocities, fast optical decline, slow infrared evolution and broad peaks in the infrared spectra are unlike any other previously known transient and unlikely to be due to a chance coincidence of an unrelated source. We thus establish that the panchromatic photons, hereafter EM170817, are spatially, temporally and physically associated with GW170817. With this firm connection, we now turn our attention to understanding the astrophysical origin of EM170817.

Evidence for Nucleosynthesis of Heavy Elements

It is well established that chemical elements up to iron in the periodic table are produced either in the Big Bang or in cores of stars or in supernova explosions. However, the origin of half the elements heavier than iron, including gold, platinum and uranium, has remained a mystery. These heavy elements are synthesized by the rapid capture of neutrons (r-process nucleosynthesis). Some models have proposed that the decompression of neutron-rich matter in a NS-NS merger may provide suitable conditions to robustly synthesize heavy r-process elements (*14, 15*). Radioactive decay of freshly synthesized unstable isotopes should drive transient electromagnetic emission known as a “kilonova” or “macronova” (e.g, (*16, 17*)). We test this hypothesis with the optical and infrared data of EM170817.

First, we compare the spectra of EM170817 to a library of astronomical transients (*8*) and theoretical models for macronova spectra (*18*). The optical spectra exhibit a featureless continuum (Figure S2, Figure S3). Infrared spectra (Figure 3) have two distinct, broad peaks in *J*-band (10620 ± 1900 Angstrom) and *H*-band (15500 ± 1430 Angstrom). Due to the high velocities in the ejecta material, each peak may be produced by a complex blend of elements instead of a single element. Although the *J*-band peak is reminiscent of either Helium or Hydrogen, the corresponding feature in the *H*-band seen in core-collapse supernovae is not present (Figure S5). If instead we compare to Type Ia supernovae, the *J*-band peak could be similar to iron group elements. However, once again the second *H*-band peak is dissimilar to that seen in Type Ia supernovae (Figure S4). By comparing predictions of spectra of macronovae (*18*), based on the assumption that Neodymium (Nd) is representative of lanthanides synthesized via the r-process, we find a reasonable match to both the *J*-band and *H*-band features for ejecta mass (M_{ej}) of $0.05 M_{\odot}$ and velocity (v) of $0.1c$ (Figure 3). Recent updates to these models, incorporating line transitions from 14 elements and tuning the relative abundance ratios, indi-

cate that Nd plays a crucial role in explaining these features (19). We conclude that a blend of elements substantially heavier than elements produced in supernovae is a viable explanation for the spectra of EM170817.

Next, we compare our infrared light curves of EM170817 (Figure 4) to a suite of existing macronova models by various groups (20–23). The slow, red photometric evolution seen in EM170817 is a generic feature of all macronova models despite their differing treatments of matter dynamics, matter geometry, nuclear heating, opacities and radiation transfer. The observed late-time emission (>3 d) is fully consistent with radioactive decay of the dynamical ejecta containing elements from all three r-process abundance peaks (Figure S10). The observed luminosity, temperature and temporal evolution roughly matches model predictions for an ejecta mass of ~ 0.05 solar masses (M_{\odot}), an ejecta velocity of $\sim 0.1c$ and an opacity (κ) of $\sim 10 \text{ cm}^2 \text{ g}^{-1}$.

We examine this match further with simple analytics. Dividing the observed bolometric luminosity ($\approx 6 \times 10^{41} \text{ erg s}^{-1}$ at 1 day) by the beta-decay heating rate of r-process elements ($\approx 1.5 \times 10^{10} \text{ erg s}^{-1} \text{ g}^{-1}$; (24)) gives a lower limit on the r-process ejecta mass of $>0.02 M_{\odot}$. The decline rate of the bolometric luminosity also matches that expected from the beta-decay heating rate of r-process elements with the time-dependent thermalization efficiency of the decay products (Figure 2). The expansion velocity of the ejecta, $0.1\text{--}0.3c$, derived from the photospheric radius is consistent with the results of merger simulations (25–27). Ejecta mass estimates based on observed emission are necessarily lower limits as a significant amount of additional matter can be hidden at lower velocity.

Next, we focus on the early-time emission of EM170817 that is hotter, more luminous and faster-rising than predicted by the suite of macronova model predictions discussed above (Figure 4). Decay of free neutrons would give an unphysically large ratio of neutron mass to ejecta mass (8). Ultraviolet flashes predicted by (28, 29) are on much shorter timescale than

observed for EM170817. Instead, we propose two possible explanations: (i) If some fraction of the ejecta is boosted to mildly relativistic speeds, the relativistic expansion shortens the observed peak time and the Doppler effect results in bluer, brighter emission. The jet cocoon model (see below) can accelerate enough material at higher latitudes. All material would have $\kappa > \approx 1 \text{ cm}^2 \text{ g}^{-1}$ in this scenario. (ii) A disk-driven wind enriched with lighter r-process elements with $\kappa \approx 0.5 \text{ cm}^2 \text{ g}^{-1}$ could also produce early, blue emission (11). This wind could be driven from a merger remnant that is a massive neutron star with an accretion torus. We could have distinguished between these two possibilities if data were available at even earlier times.

A Synthesized Model Explaining the Panchromatic Photons

We discuss three models in an effort to build a self-consistent picture that explains the γ -ray, X-ray, ultraviolet, optical, infrared and radio photons (Figure 5).

A Classical, On-Axis Short Hard Gamma Ray Burst: Ruled Out

A classical short hard gamma ray burst (sGRB) is produced by a jet in the line-of-sight of the observer (Model A in Figure 5) that is narrow (opening angle $\theta_{\text{jet}} \sim 10^\circ$) and ultra-relativistic (Lorentz factor $\Gamma > \sim 100$). The progenitors of sGRBs have long been hypothesized to be NS-NS mergers (30). However, the observed γ -ray luminosity of EM170817 ($\sim 10^{47} \text{ erg s}^{-1}$, (3, 4)) is lower than typical sGRBs by four orders of magnitude (31, 32). If EM170817 were simply an extremely weak sGRB, then the successful breakout of a narrow, ultra-relativistic jet would require $< 3 \times 10^{-6} M_\odot$ of material that was previously ejected in the direction of the jet (8). If the jet opening angle were wider, it would require even less material to successfully break out (8). Such a low ejecta mass is in contradiction with the observed bright UVOIR counterpart, which indicates $\approx 0.05 M_\odot$ of ejecta. Furthermore, this scenario cannot account for the delayed onset of X-ray emission (11) and radio emission (13).

A Classical, Off-Axis Short Hard Gamma Ray Burst: Unlikely

Next, we consider the possibility of a classical off-axis sGRB where the observer is not in the line-of-sight of a strong, ultra-relativistic jet (Model B in Figure 5). Given the sharp drop in observed γ -ray luminosity with observing angle, we find that the observer could only be off-axis by $<8^\circ$ (8). Such a slightly off-axis orientation is unlikely as only a small fraction ($\approx 5\%$) of observing angles are consistent with the observational constraints. Moreover, in this scenario, EM170817 is expected to exhibit a bright afterglow at all wavelengths roughly one day after the NS-NS merger, when the external shock decelerates to $\Gamma \sim 10$. Initial non-detections in the radio (13) and X-ray (11) observations at this phase constrain the circummerger environment to an implausibly low density ($<10^{-6} \text{ cm}^{-3}$). Another problem is that a hypothetical on-axis observer to such a sGRB would expect to see photons harder than we have thus far seen in sGRBs (8). Thus, it is unlikely that the γ -rays are produced by a slightly off-axis sGRB.

We conclude that EM170817 is not similar to the classical population of previously observed sGRBs. While the observed γ -rays are indicative of a relativistic outflow (with or without a jet), they must originate in a different physical mechanism (8). We explore the possibility of a structured jet in sGRBs with a distribution of Lorentz factors and identify multiple challenges with this model (8). Therefore, next, we propose a model with a wide-angle mildly relativistic outflow that propagates in our direction with a relatively small Lorentz factor.

Cocoon Breakout: A concordant picture

Based on our UVOIR observations, we estimate that a few hundredths of a solar mass of ejecta are propelled into the circummerger medium of a NS-NS merger with velocities spanning a few tenths the speed of light. We consider a model where a relativistic jet is launched after a short delay, perhaps on account of a delayed collapse of the hyper-massive neutron star into a black hole. As the jet drills through the ejecta, the material enveloping the jet inflates to

form a pressurized cocoon that expands outward at mildly relativistic speeds. There are two possibilities: If the jet is wide-angle ($\approx 30^\circ$), it will become choked and fail to drill out (Model C in Figure 5). If the jet is narrow ($\approx 10^\circ$) and long-lived, it could penetrate the ejecta and look like a classical sGRB to an on-axis observer (Model D in Figure 5).

Independent of the fate of the jet that created the cocoon, recent numerical simulations (29) show that the cocoon would expand at mildly relativistic velocities ($\Gamma \approx 2 - 3$) over a wide opening angle ($\approx 40^\circ$) with energy comparable to the jet. The cocoon has a wide enough angle and sufficient kinetic energy to easily explain the observed γ -rays. However, it remains unclear how a cocoon would dissipate its energy internally at the radius where γ -rays are observed, given its ballistic and homologous expansion (unlike sGRB jets which are expected to be variable with irregular internal velocities and structure that can dissipate the jet energy by internal shocks or magnetic reconnection). A wide angle mildly relativistic cocoon, found by (29), was recently proposed as a source of wide-angle γ -ray emission (33). However, this was based on an ad-hoc dissipation process that is somehow at work near the photosphere (33). Here, we suggest that the dissipation mechanism is the interaction of the cocoon with the ejecta and that the observed γ -rays result from the breakout of the mildly relativistic shock (driven by the cocoon) from the leading edge of the ejecta. We find that such a breakout can explain all properties of the observed low-luminosity γ -rays if its Lorentz factor is $\approx 2 - 3$ and the breakout radius is $\sim 3 \times 10^{11} \text{cm}$ (8).

We performed a relativistic hydrodynamical simulation in which a jet is injected into expanding ejecta to verify this picture for EM170817 (8). We find that even if a minute amount of ejecta ($\approx 3 \times 10^{-9} M_\odot$) moves at $0.8c$, the breakout radius and velocity match those needed to produce the observed γ -rays for a wide range of ejecta and jet properties (8). For example, in the simulation shown in Figure 6, a shock with $\Gamma \approx 2.5$ breaks out 10 s after the merger at a radius of $2.4 \times 10^{11} \text{cm}$, generating γ -ray emission that would be observed with a delay of 2 s

with respect to merger time (consistent with the *Fermi* observations; (3, 4)). After the cocoon breaks out, the photons that were deposited by the shock diffuse outwards and produce cooling emission that fades on timescales of hours (29). After a few hours, radioactive decay of r-process elements becomes the dominant source of the observed emission. The emission during the first day is dominated by fast cocoon material ($v \approx 0.4c$), which is composed of high-latitude, low-opacity ($\kappa \sim 1 \text{ cm}^2 \text{ g}^{-1}$) ejecta that was accelerated by the jet to high velocities. After a few days, the slower, higher-opacity ($\kappa \sim 10 \text{ cm}^2 \text{ g}^{-1}$) dynamical ejecta begins to dominate the emission. We find that the bolometric light curve evolution and the temperature evolution predicted by this simulation is consistent with our UVOIR observations (Figure 2).

The available radio and X-ray data are broadly consistent with both cocoon scenarios albeit with slightly different circummerger densities (11, 13). If the jet is choked, the radio and X-ray data could be explained by the forward shock that the expanding cocoon drives into the circummerger medium. If the jet is successful, the radio and X-ray data could be explained as a widely off-axis afterglow of the jet. If this emission is from the forward shock of a cocoon, we predict that the X-rays and radio will continue to rise. On the other hand, if this emission is from a widely off-axis afterglow of the jet, we predict that it will evolve slowly and eventually fade. In both scenarios, a cocoon would be needed to explain the γ -rays. We conclude that the cocoon model can self-consistently explain the multi-wavelength properties of EM170817 spanning γ -rays to radio.

A “Bright” Future

Now we consider the question of whether EM170817 was an exceptional event or whether multi-messenger detections will soon become routine. The large ejecta masses and high velocities seen in EM170817 suggests that intrinsically luminous UVOIR macronova emission should accompany every NS-NS merger. If our proposed mildly relativistic cocoon model is

correct, the wide opening angle of the cocoon implies that γ -rays would be emitted towards the observer in about 30% of NS-NS mergers. If the jet is choked, we expect to see late onset of radio and X-ray emission from the cocoon forward shock. If the jet producing the cocoon successfully breaks out, the source would appear either as a classical wide off-axis afterglow or a classical on-axis afterglow depending on the observer's line-of-sight. The launch of a successful on-axis cocoon jet may already have been seen in previous reports of possible late-time excess optical/infrared emission in sGRBs attributed to macronovae. In Figure 4, we find that the excess seen in GRB 130603B (34), GRB 160821B (35) and GRB 050709 (36) are roughly consistent with our observed light curve for EM170817. Separately, a plateau in the distribution of durations of sGRB may indicate that a large fraction of sGRBs may have choked jets (37). Joint gravitational wave and electromagnetic observations of NS-NS mergers will shed light on the relative fraction of cocoons with choked jets and cocoons with successful jets.

Now we consider whether NS-NS mergers could be the primary sites of r-process nucleosynthesis. This depends on both the rate of NS-NS mergers and the average amount of r-process material synthesized per merger. Based on the macronova light curve, we estimated a lower limit on the mass of the produced r-process elements in EM170817 to be $M_{\text{ej}} \approx 0.05 M_{\odot}$. The solar abundance pattern shows that the first of three r-process peaks accounts for $\approx 80\%$ of the total r-process abundance (Figure S10 and (8)). To account for the observed solar abundance in all three r-process peaks with NS-NS mergers, we would need a rate of $\sim 500 \text{ Gpc}^{-3} \text{ yr}^{-1} (M_{\text{ej}}/0.05 M_{\odot})^{-1}$. To account for the observed abundance in the two heavier r-process peaks with NS-NS mergers, the rate would only need to be $\sim 100 \text{ Gpc}^{-3} \text{ yr}^{-1}$. Based on the detection of GW170817, a NS-NS merger rate of $320\text{--}4740 \text{ Gpc}^{-3} \text{ yr}^{-1}$ was estimated at 90% confidence (1). This is larger than the classical sGRB beaming-corrected rate (38, 39) and larger than the predicted fraction of NS-NS mergers based on the Galactic population (40). Based on an archival search for transients like EM170817 in the Palomar Transient

Factory database, we find a $3\text{-}\sigma$ upper limit on the rate of $800\text{ Gpc}^{-3}\text{ yr}^{-1}$ (8). Therefore the large ejecta mass of EM170817 and the high rate estimates of GW170817/EM170817 are consistent with the scenario that NS-NS mergers are the main production sites of r-process elements of the Milky Way (as predicted by (14)).

The large rate, the wide angle for contemporaneous γ -rays, the bright UVOIR emission, the forward shock giving a late onset of X-rays and radio, the increase in sensitivity of GW interferometers, the increase in sensitivity of EM facilities (e.g. (41–44)) — all bode well for a “bright” photon-laden EM+GW future.

References

1. The LIGO Scientific Collaboration, the Virgo Collaboration, *Journal TBD* (2017).
2. A. Goldstein, *et al.*, *Gamma Ray Coordinates Network Circular* **21528** (2017).
3. LVC, GBM, Integral, *et al.* **in preparation** (2017).
4. A. Goldstein, *et al.* **submitted** (2017).
5. The LIGO Scientific Collaboration, the Virgo Collaboration, *Gamma Ray Coordinates Network Circular* **21513** (2017).
6. N. Gehrels, *et al.*, *Astrophysical Journal* **820**, 136 (2016).
7. D. Cook, *et al.*, *ApJ* (2017).
8. Supplementary materials are available on Science online .
9. D. Coulter, *et al.*, *Gamma Ray Coordinates Network Circular* **21529** (2017).
10. Coulter, *et al.* **in preparation** (2017).

11. P. Evans, *et al.*, *Science* (2017).
12. E. Troja, L. Piro, T. Sakamoto, B. Cenko, A. Lien, *Gamma Ray Coordinates Network Circular* **21765** (2017).
13. G. Hallinan, *et al.*, *Science* (2017).
14. J. M. Lattimer, D. N. Schramm, *Astrophysical Journal Letters* **192**, L145 (1974).
15. C. Freiburghaus, S. Rosswog, F.-K. Thielemann, *Astrophysical Journal Letters* **525**, L121 (1999).
16. L. Li, B. Paczyński, *Astrophysical Journal Letters* **507**, L59 (1998).
17. R. Fernández, B. D. Metzger, *Annual Review of Nuclear and Particle Science* **66**, 23 (2016).
18. J. Barnes, D. Kasen, *Astrophysical Journal* **775**, 18 (2013).
19. D. Kasen, *et al.*, *TBD* (2017).
20. D. Kasen, N. R. Badnell, J. Barnes, *ApJ* **774**, 25 (2013).
21. M. Tanaka, K. Hotokezaka, *ApJ* **775**, 113 (2013).
22. S. Rosswog, *et al.*, *Classical and Quantum Gravity* **34**, 104001 (2017).
23. R. T. Wollaeger, *et al.*, *MNRAS* **submitted** (2017). ArXiv:1705.07084.
24. K. Hotokezaka, *et al.*, *MNRAS* **459**, 35 (2016).
25. K. Hotokezaka, *et al.*, *Physics Review D* **87**, 024001 (2013).
26. A. Bauswein, S. Goriely, H.-T. Janka, *Astrophysical Journal* **773**, 78 (2013).

27. S. Rosswog, *Philosophical Transactions of the Royal Society of London Series A* **371**, 20120272 (2013).
28. M. A. Aloy, H.-T. Janka, E. Müller, *A&A* **436**, 273 (2005).
29. O. Gottlieb, E. Nakar, T. Piran, *ArXiv e-prints* (2017). ArXiv:1705.10797.
30. D. Eichler, M. Livio, T. Piran, D. N. Schramm, *Nature* **340**, 126 (1989).
31. E. Nakar, *Phys. Rep.* **442**, 166 (2007).
32. W. Fong, E. Berger, R. Margutti, B. A. Zauderer, *Astrophysical Journal* **815**, 102 (2015).
33. D. Lazzati, *et al.*, *ApJ* **submitted** (2017). ArXiv:1709.01468.
34. N. R. Tanvir, *et al.*, *Nature* **500**, 547 (2013).
35. M. M. Kasliwal, O. Korobkin, R. M. Lau, R. Wollaeger, C. L. Fryer, *ApJ* **843**, L34 (2017).
36. Z.-P. Jin, *et al.*, *Nature Communications* **7**, 12898 (2016).
37. R. Moharana, T. Piran, *MNRAS* **submitted** (2017). ArXiv:1705.02598.
38. D. Wanderman, T. Piran, *Monthly Notices of the Royal Astronomical Society* **448**, 3026 (2015).
39. Z.-P. Jin, *et al.*, *ArXiv e-prints* (2017). ArXiv:1708.07008.
40. E. S. Phinney, *Astrophysical Journal Letters* **380**, L17 (1991).
41. E. Bellm, S. Kulkarni, *Nature Astronomy* **1**, 0071 (2017).
42. A. M. Moore, *et al.*, *Ground-based and Airborne Telescopes VI* (2016), vol. 9906 of *SPIE Proceedings*, p. 99062C.

43. N. Ganot, *et al.*, *Astrophysical Journal* **820**, 57 (2016).
44. S. B. Cenko, *et al.*, *American Astronomical Society Meeting Abstracts* (2017), vol. 229 of *American Astronomical Society Meeting Abstracts*, p. 328.04.
45. D. Svinkin, *et al.*, *Gamma Ray Coordinates Network Circular* **21515** (2017).
46. J. Barnes, D. Kasen, M.-R. Wu, G. Martínez-Pinedo, *ApJ* **829**, 110 (2016).
47. D. A. Perley, *et al.*, *ApJ* **696**, 1871 (2009).
48. B. Yang, *et al.*, *Nature Communications* **6**, 7323 (2015).
49. S. Eikenberry, *et al.*, *Ground-based and Airborne Instrumentation for Astronomy IV* (2012), vol. 8446 of *Proc. SPIE*, p. 84460I.
50. M. F. Skrutskie, *et al.*, *AJ* **131**, 1163 (2006).
51. J. C. Wilson, *et al.*, *Instrument Design and Performance for Optical/Infrared Ground-based Telescopes*, M. Iye, A. F. M. Moorwood, eds. (2003), vol. 4841 of *Proc. SPIE*, pp. 451–458.
52. M. B. Vincent, *et al.*, *Instrument Design and Performance for Optical/Infrared Ground-based Telescopes*, M. Iye, A. F. M. Moorwood, eds. (2003), vol. 4841 of *Proc. SPIE*, pp. 367–375.
53. P. O. Lagage, *et al.*, *The Messenger* **117**, 12 (2004).
54. M. Cohen, *et al.*, *AJ* **117**, 1864 (1999).
55. I. M. Hook, *et al.*, *PASP* **116**, 425 (2004).

56. G. Gimeno, *et al.*, *Ground-based and Airborne Instrumentation for Astronomy VI* (2016), vol. 9908 of *Proc. SPIE*, p. 99082S.
57. K. C. Chambers, *et al.*, *ArXiv e-prints* (2016). ArXiv:1612.05560.
58. A. E. Dolphin, *PASP* **112**, 1383 (2000).
59. Gaia Collaboration, *et al.*, *A&A* **595**, A2 (2016).
60. W. D. Vacca, M. C. Cushing, J. T. Rayner, *PASP* **115**, 389 (2003).
61. J. B. Oke, *et al.*, *PASP* **107**, 375 (1995).
62. M. Diaz, *et al.*, *Gamma Ray Coordinates Network Circular* **21895** (2017).
63. C. Wolf, S. W. Chang, A. Möller, *Gamma Ray Coordinates Network Circular* **21560** (2017).
64. P. Wiseman, T.-W. Chen, G. J., P. Schady, *Gamma Ray Coordinates Network Circular* **21584** (2017).
65. T.-W. Chen, W. P., G. J., P. Schady, *Gamma Ray Coordinates Network Circular* **21608** (2017).
66. W. L. Freedman, *et al.*, *ApJ* **553**, 47 (2001).
67. S. Sakai, *et al.*, *ApJ* **529**, 698 (2000).
68. E. F. Schlafly, D. P. Finkbeiner, *ApJ* **737**, 103 (2011).
69. J. A. Cardelli, G. C. Clayton, J. S. Mathis, *ApJ* **345**, 245 (1989).
70. D. Foreman-Mackey, D. W. Hogg, D. Lang, J. Goodman, *PASP* **125**, 306 (2013).

71. E. Nakar, A. Gal-Yam, D. B. Fox, *ApJ* **650**, 281 (2006).
72. B. P. Abbott, *et al.*, *ApJ* **832**, L21 (2016).
73. M. M. Kasliwal, Bridging the gap : elusive explosions in the local universe, Ph.D. thesis, California Institute of Technology (2011).
74. D. Makarov, P. Prugniel, N. Terekhova, H. Courtois, I. Vauglin, *A&A* **570**, A13 (2014).
75. R. B. Tully, *et al.*, *AJ* **138**, 323 (2009).
76. S. Alam, *et al.*, *ApJS* **219**, 12 (2015).
77. M. P. Haynes, *et al.*, *AJ* **142**, 170 (2011).
78. D. C. Martin, *et al.*, *ApJ* **619**, L1 (2005).
79. E. L. Wright, *et al.*, *AJ* **140**, 1868 (2010).
80. L. P. Singer, *et al.*, *ApJ* **829**, L15 (2016).
81. E. J. Murphy, *et al.*, *ApJ* **737**, 67 (2011).
82. C.-N. Hao, *et al.*, *ApJ* **741**, 124 (2011).
83. S. S. McGaugh, J. M. Schombert, *ApJ* **802**, 18 (2015).
84. D. Cook, A. Van Sistine, L. Singer, M. Kasliwal, *Gamma Ray Coordinates Network Circular* **21535** (2017).
85. G. Dály, Z. Frei, G. Galgóczi, P. Raffai, R. S. de Souza, *VizieR Online Data Catalog* **7275** (2016).
86. G. Dály, B. Bécsy, P. Raffai, *Gamma Ray Coordinates Network Circular* **21516** (2017).

87. M. Capaccioli, *et al.*, *A&A* **581**, A10 (2015).
88. R. J. Foley, C. D. Kilpatrick, M. Nicholl, E. Berger, *Gamma Ray Coordinates Network Circular* **21536** (2017).
89. P.-C. Yu, C.-C. Ngeow, W.-H. Ip, *Gamma Ray Coordinates Network Circular* **21669** (2017).
90. R. L. C. Ogando, M. A. G. Maia, P. S. Pellegrini, L. N. da Costa, *AJ* **135**, 2424 (2008).
91. D. H. Jones, *et al.*, *MNRAS* **399**, 683 (2009).
92. B. D. Metzger, D. L. Kaplan, E. Berger, *ApJ* **764**, 149 (2013).
93. P. Evans, *et al.*, *Gamma Ray Coordinates Network Circular* **21612** (2017).
94. L. C. Ho, *ARA&A* **46**, 475 (2008).
95. E. da Cunha, S. Charlot, D. Elbaz, *MNRAS* **388**, 1595 (2008).
96. G. Bruzual, S. Charlot, *MNRAS* **344**, 1000 (2003).
97. A. G. Bruzual, *Stellar Populations as Building Blocks of Galaxies*, A. Vazdekis, R. Peletier, eds. (2007), vol. 241 of *IAU Symposium*, pp. 125–132.
98. L. Bianchi, A. Conti, B. Shiao, *VizieR Online Data Catalog* **2335** (2014).
99. G. Neugebauer, *et al.*, *ApJ* **278**, L1 (1984).
100. A. M. Hopkins, The Phoenix Multiwavelength Deep Survey, Ph.D. thesis, School of Physics, University of Sydney, NSW, 2006, Australia (1998).
101. L. L. Cowie, E. M. Hu, A. Songaila, E. Egami, *ApJ* **481**, L9 (1997).

102. J. J. Condon, *ARA&A* **30**, 575 (1992).
103. E. M. Sadler, J. R. Allison, D. L. Kaplan, T. Murphy, *Gamma Ray Coordinates Network Circular* **21645** (2017).
104. M. J. Meyer, *et al.*, *MNRAS* **350**, 1195 (2004).
105. P. C. Peters, J. Mathews, *Physical Review* **131**, 435 (1963).
106. K. Belczynski, V. Kalogera, T. Bulik, *ApJ* **572**, 407 (2002).
107. D. R. Lorimer, *Living Reviews in Relativity* **11** (2008).
108. R. O’Shaughnessy, V. Kalogera, K. Belczynski, *ApJ* **716**, 615 (2010).
109. O. Bromberg, E. Nakar, T. Piran, R. Sari, *ApJ* **740**, 100 (2011).
110. R. Harrison, O. Gottlieb, E. Nakar, *ArXiv e-prints* (2017). ArXiv:1707.06234.
111. A. Perego, *et al.*, *MNRAS* **443**, 3134 (2014).
112. D. M. Siegel, R. Ciolfi, L. Rezzolla, *ApJ* **785**, L6 (2014).
113. P. W. Guilbert, A. C. Fabian, M. J. Rees, *MNRAS* **205**, 593 (1983).
114. Y. Lithwick, R. Sari, *ApJ* **555**, 540 (2001).
115. E. Berger, *ARA&A* **52**, 43 (2014).
116. P. Serra, *et al.*, *MNRAS* **422**, 1835 (2012).
117. G. Ghirlanda, G. Ghisellini, A. Celotti, *A&A* **422**, L55 (2004).

118. E. P. Mazets, *et al.*, *Gamma-Ray Bursts in the Afterglow Era*, M. Feroci, F. Frontera, N. Masetti, L. Piro, eds. (2004), vol. 312 of *Astronomical Society of the Pacific Conference Series*, p. 102.
119. S. A. Colgate, *Canadian Journal of Physics* **46**, S476 (1968).
120. E. Nakar, R. Sari, *ApJ* **747**, 88 (2012).
121. E. Nakar, *ApJ* **807**, 172 (2015).
122. A. Mignone, *et al.*, *ApJS* **170**, 228 (2007).
123. O. Korobkin, S. Rosswog, A. Arcones, C. Winteler, *MNRAS* **426**, 1940 (2012).
124. B. D. Metzger, A. Bauswein, S. Goriely, D. Kasen, *MNRAS* **446**, 1115 (2015).
125. N. M. Law, *et al.*, *PASP* **121**, 1395 (2009).
126. Y. Cao, P. E. Nugent, M. M. Kasliwal, *PASP* **128**, 114502 (2016).
127. F. J. Masci, *et al.*, *PASP* **129**, 014002 (2017).
128. C. Frohmaier, M. Sullivan, P. E. Nugent, D. A. Goldstein, J. DeRose, *ApJS* **230**, 4 (2017).
129. J. S. Bloom, *et al.*, *PASP* **124**, 1175 (2012).
130. W. Zhao, F. Rusu, J. K. Wu, P. Nugent, *International Journal of Computational Science and Engineering (IJCSE)*. *Accepted in June* (2016).
131. Y. Sekiguchi, K. Kiuchi, K. Kyutoku, M. Shibata, *Phys. Rev. D* **91**, 064059 (2015).
132. D. Radice, *et al.*, *MNRAS* **460**, 3255 (2016).
133. B. D. Metzger, R. Fernández, *MNRAS* **441**, 3444 (2014).

134. S. Wanajo, *et al.*, *ApJ* **789**, L39 (2014).
135. M.-R. Wu, R. Fernández, G. Martínez-Pinedo, B. D. Metzger, *MNRAS* **463**, 2323 (2016).
136. K. Hotokezaka, T. Piran, M. Paul, *Nature Physics* **11**, 1042 (2015).
137. C. Sneden, J. J. Cowan, R. Gallino, *ARA&A* **46**, 241 (2008).
138. D. J. Sand, *et al.*, *ApJ* **822**, L16 (2016).
139. T. R. Diamond, P. Hoefflich, C. L. Gerardy, *ApJ* **806**, 107 (2015).
140. E. L. Fitzpatrick, *PASP* **111**, 63 (1999).
141. F. Yuan, *et al.*, *MNRAS* **461**, 2003 (2016).
142. M. Ergon, *et al.*, *A&A* **562**, A17 (2014).
143. H. J. Borish, *et al.*, *ApJ* **801**, 7 (2015).
144. F. Patat, *et al.*, *ApJ* **555**, 900 (2001).
145. S. Goriely, *A&A* **342**, 881 (1999).
146. D. Coulter, *et al.*, *Gamma Ray Coordinates Network Circular* **21567** (2017).
147. M. Drout, *et al.* **in preparation** (2017).
148. S. Yang, *et al.*, *Gamma Ray Coordinates Network Circular* **21531** (2017).
149. Valenti, *et al.* **in preparation** (2017).
150. M. Nicholl, *et al.*, *Gamma Ray Coordinates Network Circular* **21541** (2017).
151. M. Soares-Santos, *et al.* **in preparation** (2017).

152. N. a. a. Tanvir, *Gamma Ray Coordinates Network Circular* **21544** (2017).
153. J. D. Simon, *et al.*, *Gamma Ray Coordinates Network Circular* **21551** (2017).
154. K. C. Chambers, *et al.*, *Gamma Ray Coordinates Network Circular* **21553** (2017).
155. Smartt, *et al.* **in preparation** (2017).
156. M. Yoshida, *et al.*, *Gamma Ray Coordinates Network Circular* **21561** (2017).
157. M. Im, C. Choi, J. Kim, H. M. Lee, S.-L. Kim, *Gamma Ray Coordinates Network Circular* **21566** (2017).
158. L. a. a. Hu, *Gamma Ray Coordinates Network Circular* **21883** (2017).
159. I. Andreoni, Ackley, *et al.* **in preparation** (2017).
160. M. Im, *et al.*, *Gamma Ray Coordinates Network Circular* **21632** (2017).
161. E. Troja, L. Piro, H. J. van Eerten, *et al.* **in press** (2017).
162. V. M. Lipunov, *et al.*, *Gamma Ray Coordinates Network Circular* **21687** (2017).
163. V. Lipunov, *et al.* **in preparation** (2017).
164. D. Malesani, *et al.*, *Gamma Ray Coordinates Network Circular* **21591** (2017).
165. S. Yang, *et al.*, *Gamma Ray Coordinates Network Circular* **21579** (2017).
166. C. Kilpatrick, *et al.*, *Gamma Ray Coordinates Network Circular* **21583** (2017).
167. N. Tominaga, *et al.*, *Gamma Ray Coordinates Network Circular* **21595** (2017).
168. K. C. Chambers, *et al.*, *Gamma Ray Coordinates Network Circular* **21590** (2017).

169. D. Coward, *et al.*, *Gamma Ray Coordinates Network Circular* **21744** (2017).
170. M. Nicholl, *et al.*, *Gamma Ray Coordinates Network Circular* **21580** (2017).
171. P. Cowperthwaite, *et al.* **in preparation** (2017).
172. S. Valenti, *et al.*, *Gamma Ray Coordinates Network Circular* **21606** (2017).
173. K. Chambers, *et al.*, *Gamma Ray Coordinates Network Circular* **21617** (2017).
174. K. Chambers, *et al.*, *Gamma Ray Coordinates Network Circular* **21633** (2017).
175. A. Grado, *et al.*, *Gamma Ray Coordinates Network Circular* **21703** (2017).

Acknowledgments

We thank Iva Kostadinova for seamlessly coordinating the GROWTH (Global Relay of Observatories Watching Transients Happen) program and Britt Griswold for beautiful graphic arts. We thank Patricia Whitelock for facilitating IRSF observations. We thank Scott Barthelmy for setting up an LVC GCN system that facilitated quick, citable communication between astronomers and maximized the science return. We thank Sterl Phinney, Shri Kulkarni and Lars Bildsten for valuable comments. We thank the staff of Gemini Observatory, in particular the director Laura Ferrarese for rapidly approving our Director’s Discretionary Time request, and our program contact scientists Mischa Shirmer, Hwi Hyun Kim, Karleyne Silva, Morten Anderson, and Ricardo Salinas for supporting and executing observations. We especially grateful to Gemini for postponing scheduled maintenance on the FLAMINGOS-2 instrument in order to obtain as much data as possible on this extraordinary event.

This work was supported by the GROWTH (Global Relay of Observatories Watching Transients Happen) project funded by the National Science Foundation under PIRE Grant No 1545949.

GROWTH is a collaborative project among California Institute of Technology (USA), University of Maryland College Park (USA), University of Wisconsin Milwaukee (USA), Texas Tech University (USA), San Diego State University (USA), Los Alamos National Laboratory (USA), Tokyo Institute of Technology (Japan), National Central University (Taiwan), Indian Institute of Astrophysics (India), Inter-University Center for Astronomy and Astrophysics (India), Weizmann Institute of Science (Israel), The Oskar Klein Centre at Stockholm University (Sweden), Humboldt University (Germany), Liverpool John Moores University (UK). The data presented here is available in observatory archives and the PLUTO simulation input and output files are available online (URLs in supplementary online text). Additional acknowledgements are in the supplementary online text.

Supplementary materials

www.sciencemag.org

Materials and Methods

Supplementary Text

Figs. S1, S2, S3, S4, S5, S6, S7, S8, S9, S10

Table S1, S2, S3

References (48-175)

Movie S1

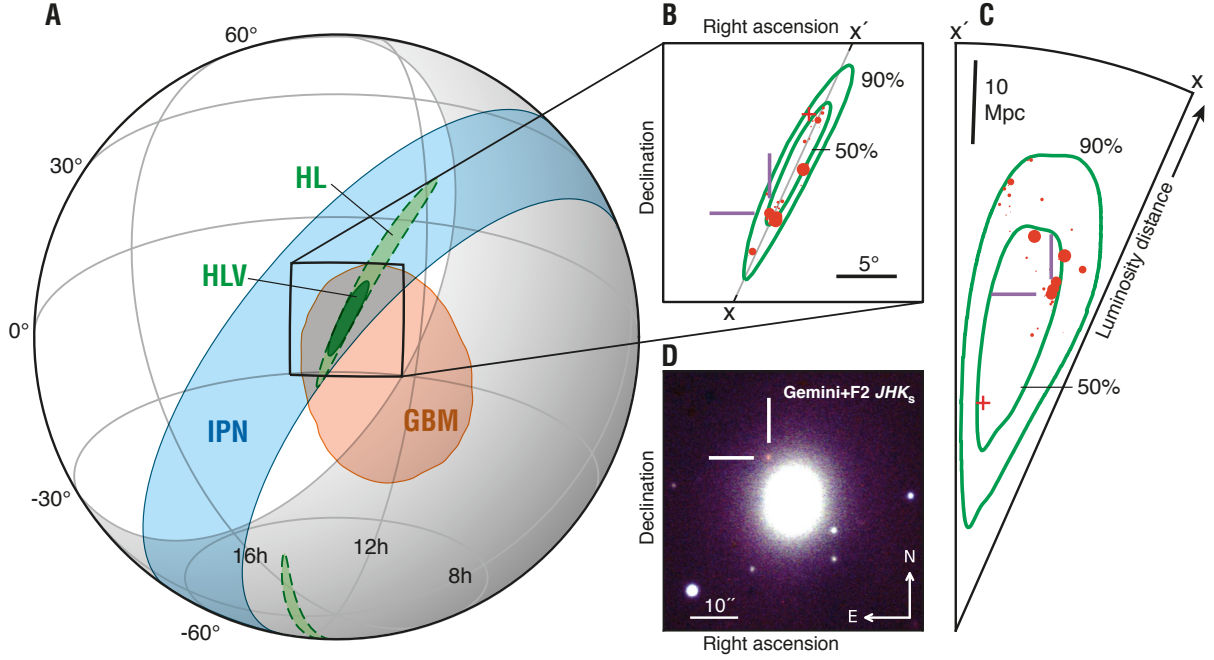


Figure 1: Localization of GW170817 and associated transient EM170817. (A) Constraints at the 90% confidence level on the sky position from gravitational-wave and γ -ray observations. The rapid LIGO localization is indicated by the green dashed contour, and the LIGO/Virgo localization by solid green. *Fermi* GBM (4) is shown in orange, and the Interplanetary Network triangulation from *Fermi* and *INTEGRAL* in blue (45). The shaded region is the Earth limb as seen by *AstroSat* which is excluded by the non-detection by the Cadmium Zinc Telluride Imager instrument. (B) 49 galaxies from the Census of the Local Universe catalog (Table S3; red, with marker size proportional to the stellar mass of the galaxy) within the LIGO/Virgo three-dimensional 50% and 90% credible volumes (green). One radio-selected optically-dark galaxy whose stellar mass is unknown is marked with a +. (C) Cross-section along the X-X' plane from panel B, showing the luminosity distances of the galaxies in comparison to the LIGO/Virgo localization. (D) False-color near-infrared image of EM170817 and its host galaxy NGC 4993, assembled from near-infrared observations with the FLAMINGOS-2 instrument on Gemini-South (8), with J , H , and K_s shown as blue, green, and red, respectively. Our K_s -band detections span 2017 Aug 18.06 to 2017 Sep 5.99 and we show 2017-08-27.97 above.

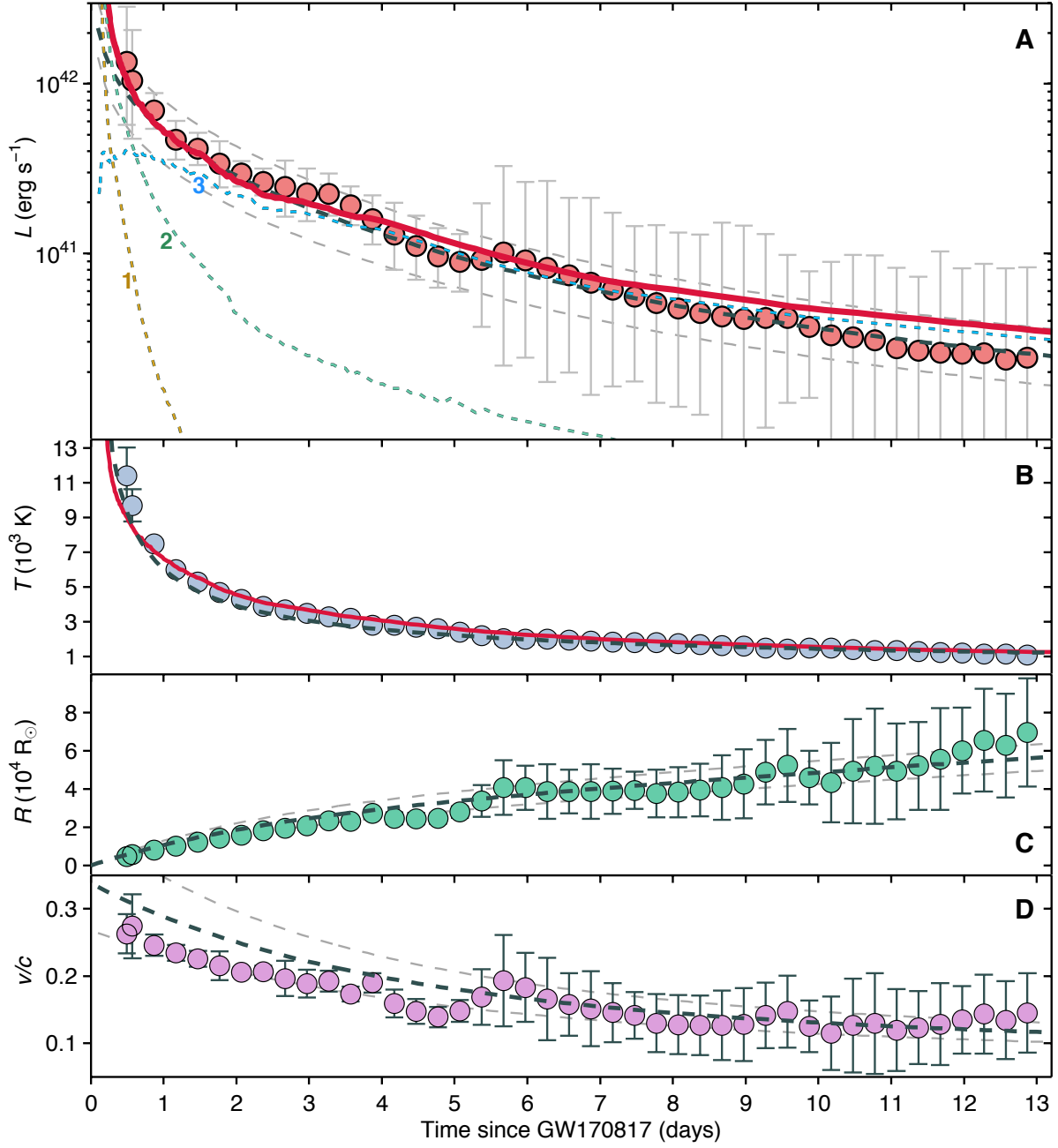


Figure 2: The evolution of EM170817 derived from the observed spectral energy distribution. (A) Bolometric luminosity. (B) Blackbody temperature. (C) Photospheric radius. (D) Inferred expansion velocity. Individual points represent blackbody fits performed at discrete epochs to which the observed photometry has been interpolated using low-order polynomial fits. Dashed lines represent an independent Markov-Chain Monte Carlo fit without directly interpolating between data points (see (8) for methodology and best-fit parameter values). The solid red lines (in A and B) represent the results of a hydrodynamical simulation of the cocoon model where the UVOIR emission is composed of (in A) cocoon cooling (yellow dashed line labeled 1), fast macronova ($>0.4c$; green dashed line labeled 2), and slow macronova ($<0.4c$; blue dashed line labeled 3).

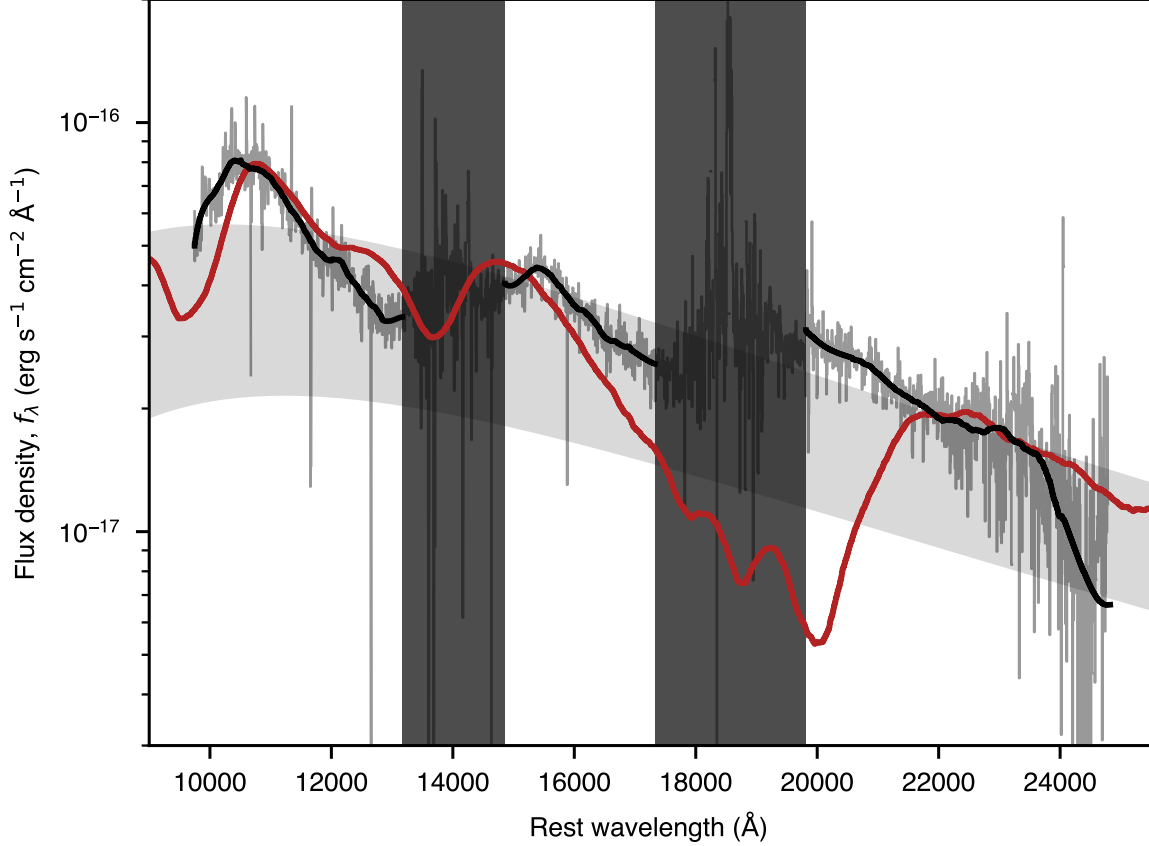


Figure 3: Near-infrared spectrum of EM170817 at 4.5 days after merger. For display purposes, the data have been smoothed using a Savitzky-Golay filter (solid black line), and the unfiltered data are shown in grey. A predicted model macronova spectrum (18) assuming an ejecta mass of $M_{\text{ej}} = 0.05M_{\odot}$ and a velocity of $v = 0.1c$ at a phase of 4.5 days post merger is shown in red. The spectra have been corrected for Milky Way extinction assuming reddening $E(B - V) = 0.1$ (8). Regions of low signal-to-noise ratio from strong telluric absorption by the Earth’s atmosphere between the near-infrared J , H , and K spectral windows are indicated by the vertical dark grey bars. The light grey shaded band is the blackbody which best fits the photometric measurements at 4.5 days (8).

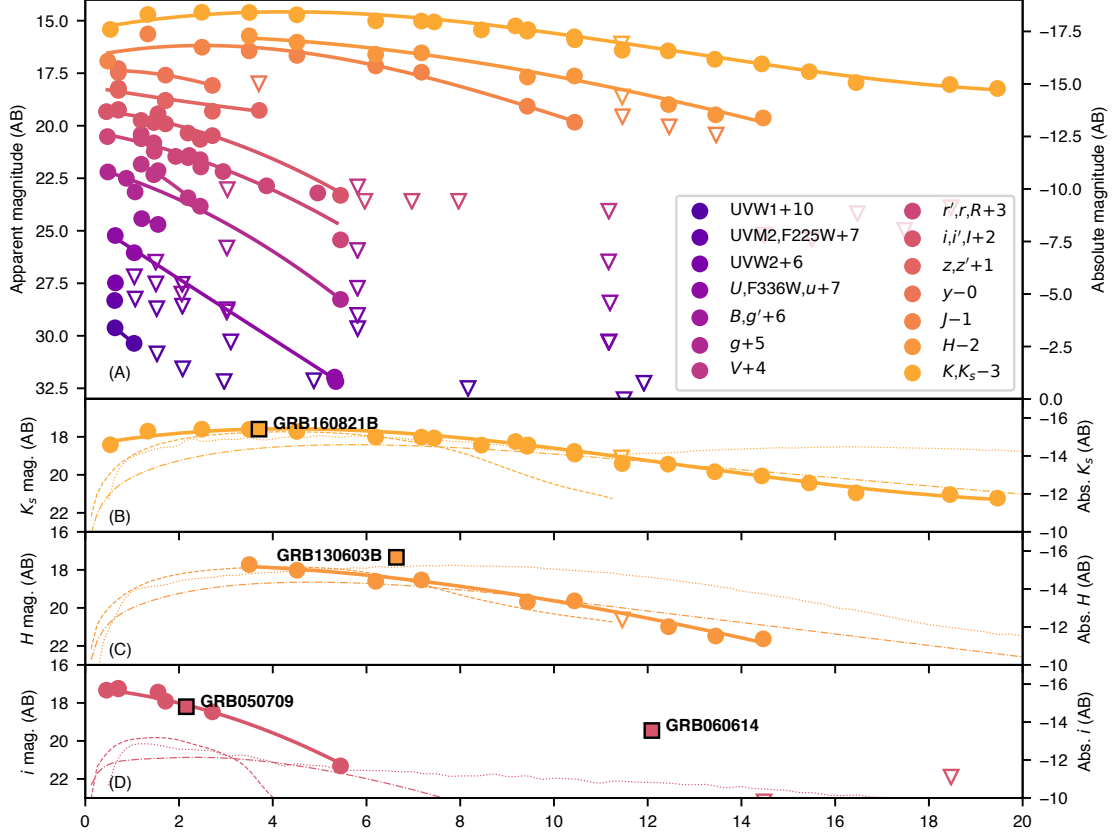
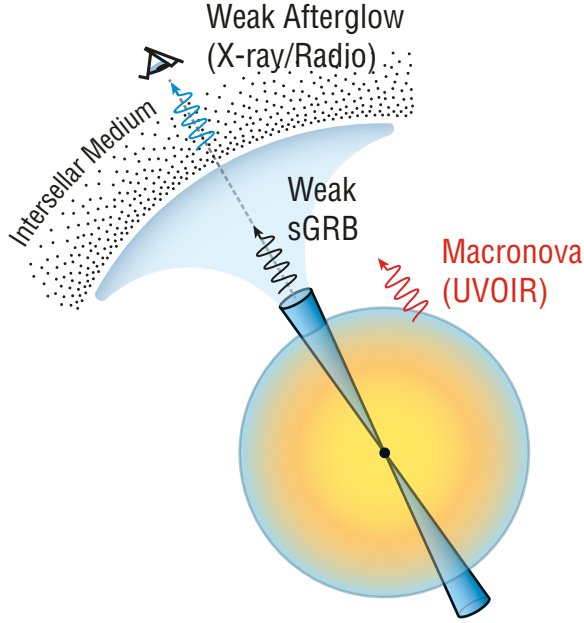
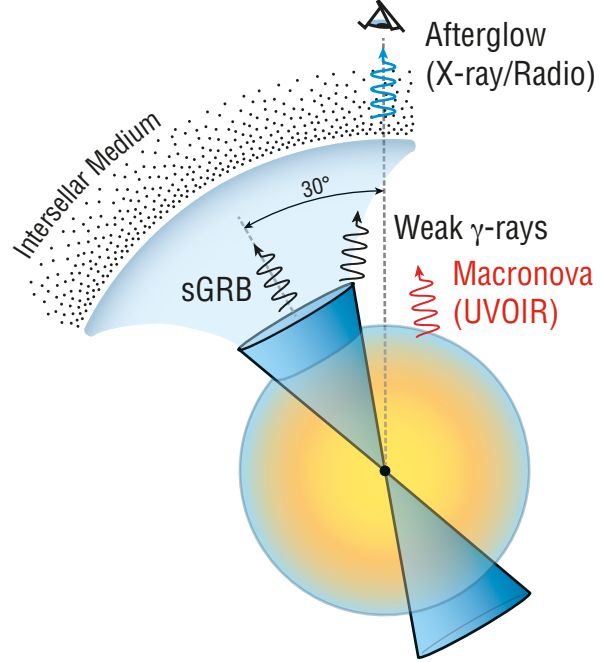


Figure 4: Lightcurves of EM170817. (A) Multi-wavelength lightcurve based on the ultraviolet/optical/near-infrared photometry of EM170817 (Table S1 and (8)) plotted as AB magnitude vs. time since merger, with open triangles indicating 5σ upper limits, colored by wavelength. (B–D) K_s , H , and i -band lightcurves of EM170817 with literature macronova model lightcurves, which show a good match in the infrared but fail to produce the observed blue emission. For all lightcurves we plot both apparent magnitude and absolute magnitude assuming a distance of 40 Mpc. Detections are shown as circles, upper limits as triangles. The models have been scaled to a distance of 40 Mpc and reddened with $E(B - V) = 0.1$ (8). The model lightcurves are the following: $M_{\text{ej}} = 0.05 M_{\odot}$, $v_{\text{ej}} = 0.1c$ from (46), model N4 with the DZ31 mass formula from (22) and $\gamma A2$ at a viewing angle of 30° from (23). Optical and near-infrared observations of previously observed short GRBs which appeared abnormally bright are shown as squares (scaled to 40 Mpc and corrected for time dilation). GRB080503 (47) would have had to be at a redshift of 0.22 to be consistent. GRB 060614 (48) is too luminous at late times. The excess emission noted in GRB 160821B (35), GRB 130603B (34) and GRB 050709 (36) appear to be similar to EM170817.

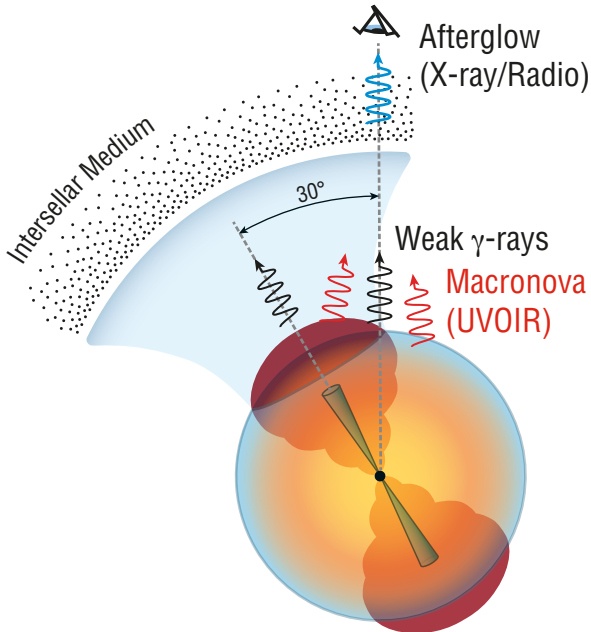
A On-axis Weak sGRB



B Slightly Off-Axis Classical sGRB



C Cocoon with Choked Jet



D On-axis Cocoon with Off-Axis Jet

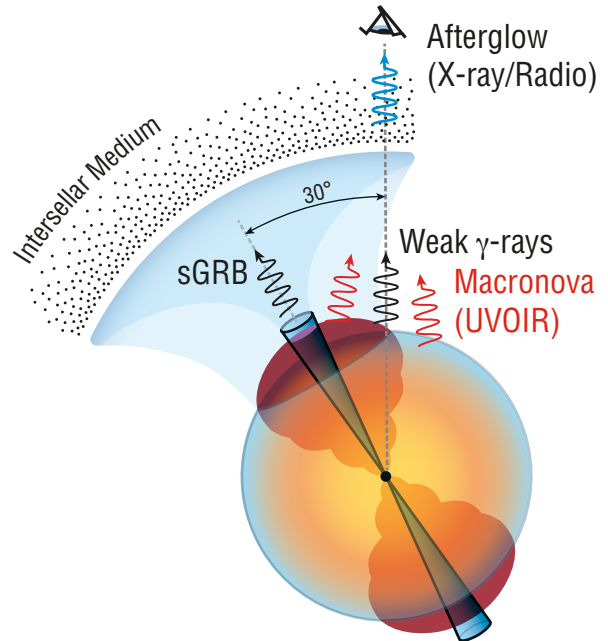


Figure 5: Model schematics considered in this paper. In each panel, the eye indicates the line of sight to the observer. (A) A classical, on-axis, ultra-relativistic, weak short gamma-ray burst (sGRB). (B) A classical, slightly off-axis, ultra-relativistic, strong sGRB. (C) A wide-angle, mildly-relativistic, strong cocoon with a choked jet. (D) A wide-angle, mildly-relativistic, weak cocoon with a successful off-axis jet.

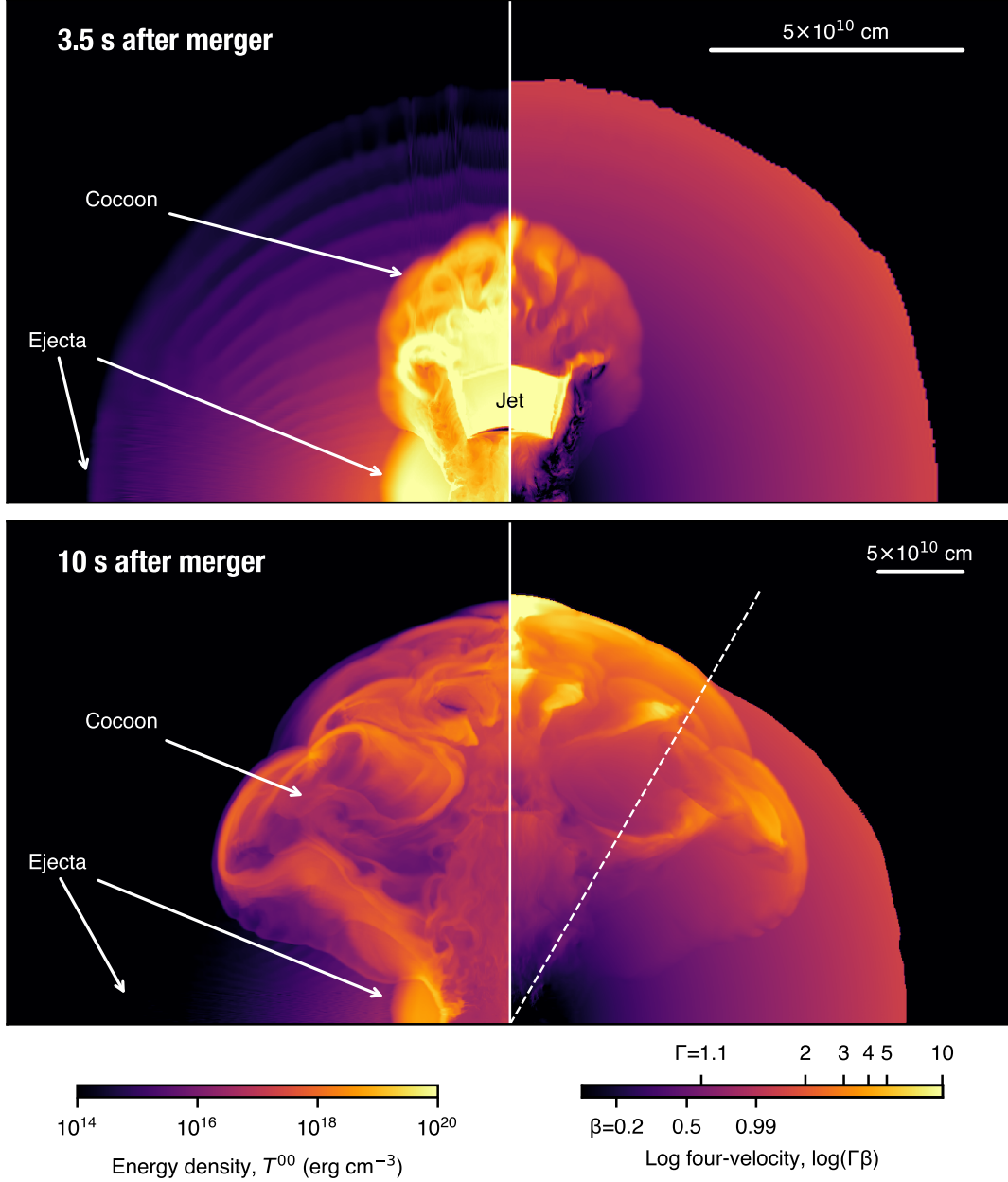


Figure 6: Snapshots from a hydrodynamic simulation of a cocoon generated by a choked jet with emission consistent with EM170817 (see (8) for details). The left half-plane is color-coded by logarithmic energy density (erg cm^{-3}) and depicts the energetics. The right half-plane is color-coded by logarithmic four-velocity ($\Gamma\beta$) and depicts the kinematics. The observer is at an angle of 40° , the ejecta mass is $0.1 M_\odot$ and the jet luminosity is $2.6 \times 10^{51} \text{ erg s}^{-1}$. Based on this simulation, a bolometric light curve is calculated and shown in Figure 2. (A) This snapshot is taken at 3.5 s, shortly after the jet injection stops. The jet is fully choked by 4s. (B) This snapshot is taken at 10 s when the cocoon breaks out. The breakout radius is $2.4 \times 10^{11} \text{ cm}$ which corresponds to 8 light-seconds. Thus, the delay between the observed γ -ray photons and the NS-NS merger is the difference in these times, 2 s. The Lorentz factor of the shock upon breakout is between 2 and 3.

Materials and Methods

Data Reduction

Below we describe the ultraviolet/optical/near-infrared photometric and spectroscopic observations, along with the relevant data reduction. The photometric results from our observations as well as the literature are collected in Table S1. A log of our spectroscopic observations is provided in Table S2.

Gemini-S F2 near-infrared imaging

We observed EM170817 between 2017 August 18 and 2017 September 15 with the FLAMINGOS-2 imaging spectrograph (49) on the 8.1-m Gemini-S Telescope on Cerro Pachón in Chile (PI Singer, Programs GS-2017B-DD-1, GS-2017B-DD-6). Near-infrared JHK_s imaging data were reduced using standard procedures and calibrated relative to near-IR sources from the Two Micron All-Sky Survey (2MASS) (50). Flat fields at each filter position were taken each night of F2 observations using the Gemini Facility Calibration Unit (GCAL). Dark frames with identical exposure times to the flat fields and science frames were also taken at least every other observing night. Median sky images were produced from a series of dithered science frames and then subtracted to remove the OH and thermal emission from the atmosphere. On nights with poor observing conditions where the sky varied on timescales faster than a full dither series, a subset of the science frames were selected to create the sky frame. The sky-subtracted science frames were then aligned using the centroid of the bright core of the galaxy NGC 4993 and then co-added.

Three 2MASS stars (2MASS J13094767–2321594, 2MASS J13094842–2323499, 2MASS J13094767–2321594) in the vicinity of EM170817 with the highest photometric quality flag (“A”) in all JHK_s filter bands were used for flux calibration for all of the F2 observations. These three bright standard stars were consistently within the field of view of all the F2 observations and thus provide robust calibrators for measuring variability from EM170817. The “A” quality flag indicates 2MASS photometry with a signal-to-noise ratio (SNR) greater than 10 and a photometric uncertainty less than 0.109 mag.

Due to its proximity to the core of the host galaxy NGC 4993, photometric measurements of EM170817 will be contaminated by the extended galaxy emission unless it is properly subtracted. In order to subtract the extended host galaxy emission, we perform a median filter subtraction of each image before measuring the flux from EM170817. Median filtering removes

small spatial scale features (i.e. point sources) and returns the extended galaxy emission as well as large spatial scale background structures. We then subtracted the median-filtered image from the original to remove the extended emission. Since we want to avoid self-subtracting emission from EM170817 in this process, we set the dimensions of the median filter to ~ 5 times the full-width at half maximum (FWHM) of the point-spread function (PSF) as measured from the 2MASS calibrator for each image.

Depending on the SNR of EM170817, aperture or PSF-fitting photometry was performed. PSF-fitting photometry is preferred due to possible residual emission from the host galaxy NGC 4993 overlapping with the projected position of EM170817 even after the median filter subtraction. However, as EM170817 faded the PSF fitting failed to yield robust photometry ($\text{SNR} > 5$) and thus aperture photometry was used. For aperture photometry, the inner radius of the aperture was set to the FWHM of the PSF as measured from the bright 2MASS calibrators. Emission from the sky and residual NGC 4993 background at the position of EM170817 was estimated from a circular annulus centered on EM170817 with an inner and outer radius of 1 and 2 times the FWHM, respectively.

Palomar WIRC near-infrared imaging

We observed EM170817 on 2017 August 27 in the K_s -band using the Wide Field Infrared Camera (WIRC; (51)) on the 200-in. Hale Telescope at Palomar Observatory (P200). Due to the low declination of EM170817 and proximity to the Sun at the time of these observations, we observed the target before 12-degree twilight at airmass > 7 . To deal with the bright and rapidly varying sky background we used the minimum exposure time for the WIRC detector of 0.92 s with 8 coadds, allowing us to dither the telescope every ~ 10 s. We obtained 4 well-dithered frames before reaching the elevation limit of the telescope, for a total integration time of 29.44 s. Individual frames were dark-subtracted and flat-fielded. A median sky frame was

constructed from the dithered science images, scaled to the sky level in each individual frame and subtracted to remove the bright background. The individual frames were then aligned and coadded using centroid measurements of 4 well-detected stars, and an astrometric solution was found by comparing to 2MASS. The photometric zero point was also determined by comparing aperture photometry of these stars to their 2MASS magnitudes.

IRSF near-infrared imaging

We observed EM170817 on 2017 August 23, 24, 26, and 28 with the near-infrared (JHK_s) simultaneous imaging camera SIRIUS installed on 1.4-m telescope IRSF (InfraRed Survey Facility) telescope at the South African Astronomical Observatory in Sutherland, South Africa (PI Barway, Program Barway-2017-01-IRSF-57). We obtained 10 dithered exposures of 30 sec each with dithering radius of 60 arcsec per observing sequence, respectively. This was repeated seven to eight times to obtain good SNR. Twilight flat frames were obtained before and after the observations. Dark frames were obtained at the end of the nights. The data reduction steps which include dark frame subtraction, flat-field correction, sky-subtraction, dither combination and astrometric calibration were carried out using the SIRIUS data reduction pipeline software¹. Similar to the FLAMINGOS-2 image processing, we perform a median filter subtraction on the IRSF images to remove the extended galaxy emission before measuring the flux from EM170817.

ANDICAM near-infrared imaging

We observed EM170817 on 2017 August 24–28 with the ANDICAM (A Novel Dual Imaging CAMera) instrument mounted on the 1.3-m telescope at Cerro Tololo Inter-American Observatory (CTIO) in Chile (PI Cobb, Program NOAO 2017B-0160). On 2017 August 24, a total of 16 individual 45 s K -band frames were obtained by imaging at 4 different dither positions at each

¹<http://irsf-software.appspot.com/yas/nakajima/sirius.html>

of 4 slightly offset telescope pointings. Each observation from 2017 August 25 to 28 consisted of a total of 20 individual 90 s K -band frames obtained by imaging at 5 different dither positions at each of 4 slightly offset telescope pointings. After 2×2 binning and flat-fielding of the individual frames, sky frames were produced at each dither position by median-combining all images taken at the same dither position (but with different telescope pointings). Corresponding dither position sky frames were subtracted from each image with rescaling to compensate for variability in background brightness. All sky-subtracted images were aligned and averaged to produce a single master K -band image for each epoch. Finally, we perform a median filter subtraction described in the FLAMGINOS-2 imaging subsection to remove the extended galaxy emission before measuring the flux from EM170817.

Apache Point Observatory near-infrared imaging

We observed EM170817 in the near-infrared (K_s -band) on 2017 August 27 using the Near-Infrared Camera & Fabry-Perot Spectrometer (NICFPS; (52)) instrument on the Apache Point Observatory 3.5-m telescope (PI Chanover, Program 2017 Q3DD04). Observations were acquired towards the end of evening twilight at high airmass (6–8) through highly variable, partially cloudy conditions. Forty 6 s exposures were acquired, alternating between the source and a position $5'$ away using a dither pattern to move the target to different parts of the detector. Because of rapidly varying clouds, only frames showing stars were used in the image processing. Unregistered frames were combined to form a sky image which was subtracted from each on-source frame. On-source frames were registered using the $K_s = 9.75$ magnitude star 2MASS J13094158–2323149 $1.4'$ away from NGC 4993 and combined into a final image using a median filter after adjusting for the variable background level using the mode of each image. Photometric calibration used the same star as that used for registration.

VLT/VISIR mid-infrared imaging

EM170817 was observed using the Very Large Telescope (VLT) spectrometer and imager for the mid-infrared (VISIR) (53) at the Cassegrain focus of UT3 on 2017 August 23, 2017 August 31, 2017 September 01, and 2017 September 06² with the J8.9 filter (central wavelength 8.72 μm). Total on-source integration times were 44.8, 17.5, 12.2, and 44.8 minutes, respectively. Chopping and nodding in perpendicular directions with 8'' amplitudes were used to remove the sky and telescope thermal background.

Observations of EM170817 and standard stars observed on the same night were reduced following the imaging data reduction processes outline in the VISIR Pipeline User Manual: chop and nod frame subtraction, source detection, and shift and add. However, since we did not detect EM170817 or any other point-source in the field of view, the chopping and nodding amplitudes and directions provided in the image headers were used to shift the images before coadding. As a test, we performed the same “blind” shift and add procedure on the images of the standard stars and found that there were negligible differences in the image quality from the properly coadded standard star images. Calibration was performed based on mid-infrared standard stars obtained within same night using the standard-star flux catalog for VISIR imaging filter based on (54).

Gemini-S GMOS optical imaging

We observed EM170817 in the optical (*g*- or *i*-band) several times between 2017 September 1 and 2017 September 5 with the Gemini Multi-Object Spectrographs (GMOS; (55, 56)) at the Gemini-S observatory. The data were reduced and coadded using the GMOS and GEMTOOL modules in PyRAF. EM170817 was not detected in any of these data. Limiting magnitudes (listed in Table S1) were calculated based on aperture photometry with photometric calibra-

²These observations were taken under proposal 60.A-9292(B), which the European Southern Observatory kindly made public to the LV-EM community.

tion done relative to the Pan-STARRS PS1 catalogs (57) after utilizing the median subtraction technique described in the FLAMGINOS-2 imaging subsection.

***HST* ultraviolet imaging and astrometric referencing**

We observed EM170817 in the ultraviolet on 2017 August 22 and 2017 August 29 with the *Hubble Space Telescope* (*HST*) Wide Field Camera 3 (WFC3) using the UVIS detectors (PI Kasliwal, Program HST-GO-15436). The first epoch used the F225W and F336W filters (2359 Å and 3355 Å central wavelengths, the latter similar to *U*-band) while the second used the F275W (2704 Å central wavelength) and F336W filters. We calculated PSF magnitudes with the software package DOLPHOT (v.2.0) (58). EM170817 was only detected in the 2017 August 22 F336W image (see figure S1). For the other images we calculated 5-sigma limiting magnitudes based on aperture photometry (see Table S1).

We registered the 2017 August 22 stack of F336W images with the *Gaia* astrometric catalog (59) to derive a more precise position of EM170817. With 22 matched *Gaia* sources the refined astrometric solution has RMS residuals of 0.05'' and we measure the position of EM170817 to be (J2000) Right Ascension 13^h09^m48.071^s, Declination $-23^{\circ}22'53.37''$.

Gemini-S FLAMINGOS-2 near-infrared spectroscopy

We observed EM170817 on 2017 August 22 and 2017 August 29 with the FLAMINGOS-2 spectrograph (49) on the 8.1-m Gemini-S Telescope on Cerro Pachón in Chile. For the first epoch we used the 3-pixel ($0.54''$ wide) slit and obtained spectra with both the JH and HK grism/filter sets to achieve a spectral resolution of $R = 600$ across the $1.0\text{--}2.4\,\mu\text{m}$ spectral range. Using an exposure time of 150 s, we obtained a sequence of 8 frames in the HK setup and 6 frames in the JH setup. The target was nodded along the slit between frames in an ABBA pattern to allow for accurate subtraction of the sky background. Baseline calibrations were also obtained, including dark frames, spectral flat fields, Ar arc lamp spectra for wavelength calibration, and observations of the A0V star HIP 69718 immediately after the science observations at similar airmass. For the second epoch we increased the total integration time to 16 frames of 150 s each using the HK setup.

Dark current subtraction, flat-fielding, sky background subtraction, coadding of the 2D spectra, wavelength calibrations, and 1D extractions were performed using standard tasks in the Gemini IRAF³ package. Telluric corrections and flux calibrations were performed using the IDL tool *xtellcor* (60). A model spectrum of Vega was used to match and remove the hydrogen lines of the Paschen and Brackett series from the A0V telluric standard and construct a telluric correction spectrum free of stellar absorption features. The resulting telluric correction spectrum was also used for the initial flux calibration. The absolute flux calibration was then found by comparing synthetic photometry derived from the spectra to the H-band photometric measurement of the transient at the same phase. Note that in the second epoch, despite the increased exposure time we did not detect EM170817.

³IRAF is distributed by the National Optical Astronomy Observatory, which is operated by the Association of Universities for Research in Astronomy (AURA) under a cooperative agreement with the National Science Foundation.

Gemini-S GMOS optical spectroscopy

We observed EM170817 on 2017 August 20 and 2017 August 21 using the Gemini Multi-Object Spectrographs (GMOS; (55, 56)) with R400 and B600 gratings. The spectra were reduced using the Gemini IRAF package⁴. The standard star (EG274) observed on 2017 August 20 was used to flux-calibrate spectra from both of the observed epochs. Both spectra show largely featureless continua. The observations taken on 2017 August 21 show a clear trace on both the blue and red sides of the detectors. The trace on the blue side of the observation on 2017 August 20 was too weak to extract.

Keck LRIS optical spectroscopy

We observed EM170817 on 2017 August 25 using the Low-Resolution Imaging Spectrometer (LRIS; (61)) on the 10-m Keck I telescope. The visibility of the target position to Mauna Kea was poor and the observations were conducted under non-optimal conditions at the end of evening twilight, with the airmass in the direction of the target increasing from 3.8 at the start of the sequence to ~ 6 at the end of the final exposure. We used the D560 dichroic to split the light between the red and blue sides, and used the 400/8500 grating on the red side and the 400/3400 grism on the blue side. The observations were processed using our analysis pipeline LPIPE and summed. A weak trace is visible at the transient location on the red-side camera. Our (low-S/N) extraction of the spectrum (figures S2 and S3) shows a featureless red continuum with no significant features (in particular, no broad or narrow emission lines), although we note that a clean extraction is complicated by the significant contamination from the spatially-varying host galaxy continuum.

⁴<http://www.gemini.edu/sciops/data-and-results/processing-software>

Bolometric Light Curve Construction

We combined available ultraviolet, optical, and near-infrared photometric data (including our Gemini, Keck, *HST*, IRSF, ANDICAM, and P200 data along with data published in LVC GCNs and (11); Table S1)⁵ on EM170817 to build a bolometric light curve using two independent approaches illustrated in figure 2. All analysis used a distance of 40 Mpc (66, 67) and a reddening of $E(B - V) = 0.1$ mag (68).

Our first method uses low-order polynomials to enable interpolation of the photometry in the individual filters. A blackbody is then fitted to the interpolated photometry for a set of discrete epochs starting from 0.49 d after GW170817 (0.04 d after the first *i*-band detection) up until 12.9 d after GW170817. Second, we fit the data with an evolving blackbody model by assuming a functional form for the time-dependence of the blackbody temperature $T(t)$ and the radius $R(t)$. After experimenting with different models we found the best functional forms to be $R(t) = R_0(1 - e^{-\lambda t}) + vt$ (a model that initially decelerates and then coasts) and $T(t) = T_0 t^\alpha$. The data were fit by computing the monochromatic flux density as a function of time and wavelength appropriate for each observation (corrected for extinction assuming $A_V = 0.31$ mag, and using the reddening law of (69) when no instrument-specific reddening data was available) and comparing with the data; no interpolation or binning was used on the data themselves. The parameter fitting was done using a Markov Chain Monte Carlo method (70): we used 80 walkers, fit for 50 iterations to achieve “burn-in”, and then fit for a further 1000 iterations, only using every 41st value to account for finite autocorrelation in the resulting chains. We then determined the best-fit parameter values and uncertainties from the posterior distributions. We restricted the fit to times ≤ 12.5 d after GW170817, since after that time the multi-wavelength coverage was significantly diminished and we typically only had detections in a single band

⁵ Note that we did not use photometry from several telescopes where the results reported in LVC GCNs were uncertain (62–65).

(K_s). Our best-fit values and uncertainties (68% confidence limits) are $R_0 = 24000 \pm 3000 R_\odot$, $v = 2500 \pm 300 R_\odot \text{ d}^{-1} = 20000 \pm 3000 \text{ km s}^{-1}$, $\lambda = 0.42 \pm 0.05 \text{ d}$, $T_0 = 6050 \pm 50 \text{ K}$, and $\alpha = -0.62 \pm 0.01$, with t in days. A model with λ finite (i.e., initially decelerating) is preferred over a model with constant velocity: χ^2 is reduced by 600 with roughly 140 degrees-of-freedom. Both approaches give us consistent results for effective temperature, photospheric radius and kinematics (see main text and figure 2). Note that in neither case do we compute a formal goodness-of-fit, as our data-set is too inhomogeneous. We are drawing data from 24 different telescopes, with many photometric systems, filter transformations, extinction coefficients, and zero-points, not all of which are fully documented. There are also significant variations in calibration methodology and host-galaxy subtraction, all of which can affect the resulting photometry. We have manually removed the data where host subtraction was known to be problematic, but quantitative model evaluation (e.g., for deviations from blackbodies) will have to wait for a uniform re-analysis of all of the data.

Supplementary Text

Census of the Local Universe Galaxy Catalog

In this section we describe the galaxy catalog used to narrow down our search of EMGW candidates within the GW trigger volume and provide basic and physical properties for each of the galaxies within the 90% volume. We find that the galaxies in the 90% volume span a large range of properties containing low-mass dwarfs as well as larger galaxies (spirals and ellipticals).

The forthcoming Census of the Local Universe (CLU) galaxy catalog consists of two parts: a compilation of known galaxies from many sources; and new galaxies (i.e., those with no previous distance information) from a four-filter, narrowband survey designed to find redshifted $H\alpha$ emission out to 200 Mpc (based on conservative predictions for the horizon of NS-NS detections with aLIGO/Virgo (71, 72)) across $\approx 3\pi$ of the northern sky (7). However, the GW localization was confined to a declination (near -25°) below the southern limit of the narrowband survey ($\delta \geq -20^\circ$), so only the compiled galaxy catalog overlapped with the GW event and will be described here.

The compiled portion of the CLU galaxy catalog (73) was taken from existing galaxy databases: NASA/IPAC Extragalactic Database (NED)⁶, Hyperleda⁷ (74), Extragalactic Distance Database⁸ (EDD; (75)), the Sloan digital sky survey DR12 (SDSS; (76)), and The Arecibo Legacy Fast ALFA (ALFALFA; (77)). The catalog contains $\sim 260,000$ galaxies with existing spectroscopic distances less than 200 Mpc. The current version of the catalog contains updates from both NED and SDSS in early 2016. Distances based on Tully-Fisher methods were favored over kinematic (i.e., redshift) distances because of the large contribution of peculiar velocities in this local sample; however, the majority of the distances are based upon redshift information.

⁶<https://ned.ipac.caltech.edu>

⁷<http://leda.univ-lyon1.fr>

⁸<http://edd.ifa.hawaii.edu>

In addition to distances, the catalog also contains compiled multi-wavelength photometric information. We have cross-matched the CLU catalog with *GALEX* all sky (78), *WISE* all sky (79), and SDSS DR12 (76) surveys to obtain fluxes from the ultraviolet (UV) to the infrared (IR), with $\sim 104,000$ matches for *GALEX* FUV, $\sim 226,000$ for *WISE* 3.4 and $22\ \mu\text{m}$, and $\sim 114,000$ for SDSS *r*-band.

We have spatially cross-matched our CLU galaxy catalog to the 90% containment volume of the LIGO/Virgo trigger (5) reported by the BAYESTAR probability sky map (80) with no assumption on orientation and found 49 galaxies. In addition, we have used the *GALEX* FUV and *WISE* 3.4 and $22\ \mu\text{m}$ bands to measure the physical properties of these galaxies. The star formation rates (SFRs) are derived from *GALEX* FUV Kron-magnitudes (81) after correcting for Milky Way extinction (68) as tabulated by NED and internal dust extinction using a combination of observed *GALEX* FUV and *WISE* $22\ \mu\text{m}$ fluxes (82). The stellar masses (M_\star) are derived from $3.4\ \mu\text{m}$ ALLWISE fluxes and a mass-to-light ratio of 0.5 (83).

Table 3 lists the basic properties of the 49 galaxies (sorted by stellar mass) along with the UV and IR fluxes, SFRs, stellar masses, and the probabilities in the containment volume (84). The galaxies span ranges of stellar mass ($10^7 M_\odot$ to $10^{10.5} M_\odot$) and SFR ($10^{-2.6} M_\odot \text{ yr}^{-1}$ to $10^{0.5} M_\odot \text{ yr}^{-1}$) suggesting that the list contains dwarfs as well as larger more massive galaxies.

Host Galaxy NGC 4993

Basic Properties

The EM counterpart for GW170817, EM170817, was reported near NGC 4993, the third most massive of the galaxies cross-matched to the LIGO/VIRGO trigger (note that NGC 4993 was not present in the top 15 galaxies in the GLADE catalog (85) and reported in (86), although it is present in their on-line catalog). NGC 4993 has been classified as an E-S0 with a morphological T-type of -3 (87) at a distance of roughly 40 Mpc, based on Tully-Fisher measurements of other galaxies in its group (66, 67). The archival *HST*/ACS F606W image (Program ID: 14840; PI Bellini) shows complicated dust lanes extending a few kpc from the nucleus (88, 89) superimposed on an elliptical galaxy, similar to many other early-type galaxies. The dust lanes may be the result of a minor merger that occurred as long as several Gyr ago. Note that the dust lanes do not extend across the position of EM170817 (figure S1), suggesting EM170817 is not located in a heavily-obscured region. This is echoed by examination of spatially-resolved spectra, which show no emission-lines within $\pm 5''$ (± 1 kpc) of the transient, and our *HST* UV images which show very little emission at the position of the EM170817 (Figure S1).

Archival optical spectra (90, 91) show a continuum dominated by old stars with a pronounced 4000 Å break indicative of little if any active star formation; [NII], [SII], and weak [OIII] emission lines are present in the nucleus with likely some $H\alpha$ emission filling in the Balmer absorption from the stellar continuum, but the relatively high [NII]/ $H\alpha$ ratio is suggestive of a low-luminosity active galactic nucleus (LLAGN) rather than star formation. Despite the lack of ongoing star formation or much nuclear $H\alpha$ emission, we note that NGC 4993 would have been detected in our ongoing $H\alpha$ narrow-band imaging survey (section) just via the [NII] emission (92): we estimate a flux for NGC 4993 of $\sim 10^{-12} \text{ erg s}^{-1} \text{ cm}^{-2}$, which is considerably higher than our $H\alpha$ sensitivity threshold (estimated at 90% completeness at a flux of $10^{-14} \text{ erg s}^{-1} \text{ cm}^{-2}$).

We estimated the Eddington ratio by computing the bolometric luminosity from the X-ray luminosity ($5.6 \times 10^{39} \text{ erg s}^{-1}$; (93)) assuming $L_{\text{bol}}/L_{\text{X-ray}} = 16$ for LLAGNs (94), while the Eddington luminosity L_{Edd} is determined from black hole mass obtained from the central velocity dispersion (163 km s^{-1} ; (90)); these imply $L_{\text{bol}}/L_{\text{Edd}} = 1.4 \times 10^{-5}$, which is similar to ratios of other LLAGNs (94).

Constraints on the NS-NS Merger Timescale

To further constrain the timescale of NS-NS mergers, we investigated star formation histories of NGC 4993 by fitting the spectral energy distribution (SED) with the package MAGPHYS⁹ (95). MAGPHYS uses the stellar population syntheses code of (96) and (97) to provide spectral evolution at wavelengths from 912 \AA to 1 mm and at ages between 1×10^5 and $2 \times 10^{10} \text{ yr}$. We collected photometric data from the *GALEX* (NUV and FUV; (78, 98)), Pan-STARRS1 (*grizy*; (57)), 2MASS (*JHK_s*; (50)), *WISE* (W1, W2, W3, W4; (79)) and *IRAS* ($60 \mu\text{m}$; (99)) surveys, where we used upper limits for the *GALEX*/FUV and *IRAS*/ $60 \mu\text{m}$ bands (Figure S7). The best-fit model gives the stellar mass of the galaxy $M_{\star} \sim 3 \times 10^{10} M_{\odot}$ and the star formation rate (SFR) $\sim 3 \times 10^{-3} M_{\odot} \text{ yr}^{-1}$. Note that there appears to be an offset between the data and the model in the region near the near-infrared (2MASS *JHK_s*) and mid-infrared (*WISE*) observations. This may reflect different methods of measuring the entire extent of NGC 4993 used for the different catalogs. Further examination of the archival images (rather than just photometric catalogs) will help resolve this issue.

For comparison, the SFR derived from *GALEX*/FUV is $\sim 4 \times 10^{-2} M_{\odot} \text{ yr}^{-1}$, the SFR from *GALEX*/NUV for stars more massive than $5 M_{\odot}$ is $\sim 3 \times 10^{-3} M_{\odot} \text{ yr}^{-1}$ (100, 101), and the SFR from the *IRAS*/ $60 \mu\text{m}$ upper limit is $< 0.08 M_{\odot} \text{ yr}^{-1}$ (102, 103). Given the varying systematics and uncertainties in both the data and the methods, we consider these to be largely consistent

⁹<http://www.iap.fr/magphys/>

and indicative of small levels of ongoing star-formation, with SFR of 10^{-3} to $10^{-2} M_{\odot} \text{ yr}^{-1}$. This is consistent with estimates based on the non-detection of neutral hydrogen (*104*). It should be noted that the estimation of the SFR is an upper limit because of the possible contamination of the central AGN.

The time since the last burst of star formation ended given by the best-fit model is ~ 2 Gyr, implying a long timescale for the merger for the NS-NS binary system. Even a more conservative limit based on the absence of early-type stars in the spectrum puts the last episodes of star-formation more than a Gyr ago. This is not consistent with previous predictions that the delay time of NS-NS mergers is short ($1 - 100$ Myr; (*105, 106*)), although there are Galactic NS-NS binaries with merger times $100 \text{ Myr} - 10 \text{ Gyr}$ (e.g., (*107*)). Moreover, population synthesis of compact object mergers finds significant numbers of sources produced after Gyr delays, with the progenitor systems formed at high redshift during the peak epochs of star formation (e.g., (*108*)).

Models

In the sections below, we discuss several details of models to explain the overall electromagnetic emission from EM170817. We estimate the maximum ejecta mass possible to have a weak, on-axis, ultra-relativistic jet break out and find a number that is implausibly low. We then consider a model where the observed γ -rays are produced by an off-axis short γ -ray burst (sGRB), and find it very difficult to produce the observed properties. We consider a structured jet and discuss the challenges with this model. We rule out a Newtonian source based on the high opacity. This motivates us to describe the analytical and numerical details of our preferred model: a shock breaking through a cocoon of material. Finally, we consider alternative sources to power the early-time emission and find that an engine-driven wind is plausible but free neutron decay is implausible.

A Weak On-Axis Jet

The observed γ -rays carried an isotropic equivalent energy of $\sim 3 \times 10^{46}$ erg over a duration of ~ 2 s, corresponding to an average luminosity of $\sim 1.5 \times 10^{46}$ erg s $^{-1}$ (3, 4). Short GRB jets produce γ -rays very efficiently (e.g., (32)), so if we observe a regular on-axis GRB the total jet isotropic equivalent energy is at most a few times larger than that of the observed γ -rays. Therefore, to evaluate if the observed γ -rays could have been produced by a weak on-axis jet we estimate the maximum ejecta mass that a jet with an opening angle θ_j and isotropic equivalent luminosity 10^{47} erg s $^{-1}$ can cross within 2 s. We approximate the ejecta as being static and spherical, with a density profile $\rho \propto r^{-2}$, where r is the radius. We assume a typical ejecta velocity of $0.2c$, a breakout time of 2 s and $r = 10^{10}$ cm. We use the jet propagation model of (109) which was calibrated numerically by (110) to estimate the breakout time¹⁰. We find that for $\theta_j = 10^\circ$ a breakout of 2 s is achieved for mass $< 3 \times 10^{-6} M_\odot$. For $\theta_j = 30^\circ$ the upper

¹⁰An applet that calculates the breakout time for various configurations can be found at <http://www.astro.tau.ac.il/~ore/propagation.html>

limit on the mass is lower by about an order of magnitude.

To verify this calculation we carried out a numerical simulation where a jet is launched into an expanding ejecta. The delay between the merger and the jet launch was 0.1 s (a short delay decreases the breakout time), the jet isotropic luminosity was $10^{47} \text{ erg s}^{-1}$, and its opening angle was 8° . We varied the total mass until the breakout took place at 2 s, which happened near a mass of $2.5 \times 10^{-6} M_\odot$, very close to the analytic prediction.

Observational and theoretical considerations indicate that the amount of mass that was ejected at high latitudes along the jet path is higher than $10^{-5} M_\odot$ by orders of magnitude. First, the bright optical emission during the first day implies that about $0.02 M_\odot$ with a relatively low optical depth ($\kappa \approx 1 \text{ cm}^2 \text{ g}^{-1}$) were ejected. This type of material is expected to be synthesized after the merger in the high latitude wind that is exposed to a high neutrino flux (e.g., (III)). Second, optical/IR emission indicates that the total ejected mass is at least $0.05 M_\odot$, and while this mass is most likely not distributed isotropically, numerical simulations show that all mass ejection processes throw a non-negligible fraction of mass at high latitudes (e.g., (25, III, I12)). Moreover, all these simulations find that the high latitude ejecta mass is larger than about $10^{-3} M_\odot$. We therefore conclude that the observed γ -rays are highly unlikely to be produced by an on-axis low-luminosity jet.

An Off-Axis Jet

An intriguing potential explanation for the extremely low luminosity of the observed γ -ray emission of EM170817 is that we observe a regular luminous sGRB, but our line-of-sight is outside of the GRB jet and the low luminosity is due to the lower Doppler boost compared to an on-axis observer. Below we examine the implications of such a configuration.

Consider a jet with an opening angle θ_j and a Lorentz factor $\Gamma \gg 1$ that radiates γ -rays. An on-axis observer sees γ -ray emission with a total energy E , a typical photon energy E_p and

a total duration t . We are interested in what an off-axis observer at a viewing angle $\theta_{\text{obs}} > \theta_j$ will see. We define the quantity $q = (\theta_{\text{obs}} - \theta_j)\Gamma$ since for an off axis observer $q \gg 1$ and the Doppler boost ratio to an on-axis observer is $\propto q^{-2}$. We denote all the off-axis observables with prime.

The effect of the Lorentz boost on the photons' energies implies:

$$\frac{E_p}{E'_p} = q^2 \quad (\text{S1})$$

The observed total isotropic equivalent energy (fluence) ratio has three regimes, depending on how far away the off-axis observer is from the edge of the jet and how wide the jet is compared with $1/\Gamma$:

$$A \equiv \frac{E}{E'} = \begin{cases} q^4 & ; \quad \theta_{\text{obs}} - \theta_j \ll \theta_j \quad (i) \\ q^6(\theta_j\Gamma)^{-2} & ; \quad \theta_{\text{obs}} - \theta_j \gg \theta_j > 1/\Gamma \quad (ii) \\ q^6 & ; \quad \theta_j < 1/\Gamma \quad (iii) \end{cases} \quad (\text{S2})$$

where we define an amplification parameter $A \equiv E/E'$. To understand this equation it is most convenient to consider first the last case, $\theta_j < 1/\Gamma$, since then the jet can be regarded as a point source. If $\theta_{\text{obs}} - \theta_j \gg \theta_j > 1/\Gamma$ then the whole solid angle of the jet (θ_j^2) contributes roughly equally to the observed fluence for an off-axis observer, compared to a solid angle $1/\Gamma^2$ that dominates the emission for an on-axis observer, thereby reducing the fluence ratio by a factor of $(\theta_j\Gamma)^2$. Finally, when $\theta_{\text{obs}} - \theta_j \ll \theta_j$ the whole jet does not contribute equally to an off-axis observer and the emission is dominated roughly by a solid angle of $(\theta_{\text{obs}} - \theta_j)^2$.

The observed duration depends on the details. If we assume that each observed pulse has a duration δt and that it is generated by an episode of emission that takes place at a radius r over some radii range $\Delta r \sim r$ then $\delta t \approx r/(2c\Gamma^2)$ and

$$\frac{\delta t}{\delta t'} = q^{-2} \quad (\text{S3})$$

If the total on-axis duration is determined not by a single episode, but by the radial length of the

jet (as in the case of internal shocks for example) then

$$t' = \max\{q^2\delta t, t\} \quad (\text{S4})$$

For EM170817 $E' \approx 3 \times 10^{46} \text{ erg}$ (3, 4). If the on-axis observer sees a regular sGRB then $A = 10^3 - 10^6$ with a typical value of $A = 10^4$. Note that $A = 10^3$ may be too low due to the requirement that the jet breaks out of the ejecta within 2 s, as a jet with a luminosity of $10^{50} \text{ erg s}^{-1}$ can break out on time only if the ejecta mass along its path is $< 10^{-3} M_\odot$ (isotropic equivalent). This is much lower than the total mass we observed assuming an opacity $\kappa \approx 1 \text{ cm}^2 \text{ g}^{-1}$ of $\sim 0.02 M_\odot$ (see main text), which is ejected presumably at high latitudes.

Classical sGRBs show non-thermal spectra and therefore the observed photons are expected to be generated above or near the photosphere. This expectation was one of the main indications that GRB jets are relativistic (113, 114) and it still provides the most robust lower limit on the Lorentz factor of GRB jets. The optical depth of a relativistic jet that radiates a spectrum with a power-law and exponential cutoff, $N_\nu \propto \nu^\alpha \exp[h\nu/E_0]$, such as the one seen in EM170817, is given by (31):

$$\tau_\Gamma \approx 10^{13} L_{51} \delta_{t,-2}^{-1} \frac{m_e c^2}{E_0} \Gamma^{-(4-\alpha)} \exp \left[-\frac{\Gamma m_e c^2}{E_0} \right] \quad (\text{S5})$$

where L is the burst luminosity, $m_e c^2$ is the electron rest-mass energy and we use the notation $Q_x = Q/10^x$ in c.g.s. units. This expression can be written using the off-axis observables and A :

$$\tau_\Gamma \approx 10^7 A L'_{47} \delta'_{t,0} \frac{m_e c^2}{E'_0} \Gamma^{-(4-\alpha)} \exp \left[-\frac{\Gamma m_e c^2}{E'_0} \right] \quad (\text{S6})$$

Note that there is still a dependence on the on-axis observed E_0 in the exponent of this equation, for which the transformation to the off-axis frame depends on A differently for each of the three regimes in equation S2. Therefore the limit on Γ that we derive below is different for each regime.

The requirement that the γ -ray source is optically thin, i.e., $\tau_\Gamma < 1$, provides a lower limit on the jet Lorentz factor $\Gamma(A)$, which in turn determines the maximal distance that we can be away from the edge of jet (i.e., $\theta_{\text{obs}} - \theta_j$) for each value of A . Figure S8 shows that distance for cases (i) and (iii) which are independent of θ_j . The results for case (ii) are similar for all realistic values of θ_j . This suggests that for $\theta_{\text{obs}} \approx 0.5$ rad we can never be in the far regimes, i.e., (ii) or (iii) since $\theta_{\text{obs}} - \theta_j \ll \theta_j$ is always true. Figure S9 shows the minimal Lorentz factor of the jet only for case (i) (near miss). This implies that if the observed γ -rays are generated by an off-axis jet then it must have $\Gamma > 100$ and the angle between us and the jet's edge cannot exceed 0.1 rad.

A luminous jet that we miss by only 0.1 rad is expected to produce a very bright afterglow roughly a day after the burst. The reason is that the blast wave driven into the circum-merger medium, which produces the afterglow, decelerates to a Lorentz factor < 10 by that time and thus its cone of emission gets into our line of sight. Hence, after about 1 d we are expected to see a regular sGRB afterglow. As shown in (11, 13) our limits on the X-ray and radio rule out this option. The only way to avoid a bright afterglow is if the merger took place in a very low density environment. In fact, taking the minimal Lorentz factor allowed by compactness (i.e., the maximal distance to the jet edge), and a typical sGRB energy with $A = 10^4$, the circum-burst number density should be as low as $\sim 10^{-6} \text{ cm}^{-3}$ for the afterglow to be consistent with the observed limits and detections in the X-ray and the radio. This value is lower by orders of magnitudes than the density inferred by sGRB afterglows (115) and for this specific event it is unexpected given the modest offset of the merger location from the center of its host (although we do not know the offset along the line-of-sight). Moreover, based on neutral hydrogen mass functions, a density of 10^{-6} cm^{-3} is ten times less likely than 10^{-3} cm^{-3} in early type galaxies (116). In addition, if EM170817 were an off-axis sGRB, then an on-axis observer would have seen a burst with a typical photon energy of $E_p \approx 10 \text{ MeV}$, much higher than the

values observed in sGRBs (117, 118). Finally, the probability to have such a near miss of the jet is only a few percent. In fact the chance to see a regular on-axis GRB is significantly higher in that case, since the jet is relatively wide (≈ 0.4 rad).

To conclude, in order for the EM170817 to be an off-axis sGRB, in addition to being lucky, we need to push all the parameters to their limits. The Lorentz factor would be the lowest one allowed by the compactness limit and the surrounding density would be extremely low. In addition the on-axis sGRB should have an E_p that is much higher than that observed in sGRBs. This implies that it is unlikely that EM170817 is generated by an off-axis observation of a typical sGRB.

A Structured Jet

We consider the possibility that short GRB jets have structure – a core with high-luminosity and high Lorentz factor; wings with lower luminosity and/or lower Lorentz factor. This structure may be induced by the jet launching mechanism or by to the interaction of the jet with the ejecta. The question then is whether the observed γ -rays could have been generated at the jet's wings, either on-axis or off-axis. Below we consider both options.

If we observe the wings on-axis, then these are wide-angle low-luminosity wings. It is unclear how such wings would be generated. If a jet is launched with a high luminosity narrow core and low-luminosity wide angle wings, then the situation is similar to the on-axis wide and weak jet discussed above. The propagation of the narrow core does not facilitate the propagation of the wide low-luminosity wings, which will be choked by the ejecta. The interaction with the ejecta is also unlikely to produce low-luminosity wide wings because a cocoon, which has a comparable energy to the jet itself, is expected to dominate the wide angle outflow.

Off-axis emission from moderate Lorentz factor (say $\Gamma \sim 10$) material at the jet wings is more plausible. In this scenario the lower Lorentz factor of the jet wings allows the γ -rays to

be observed although the angle to the jet edge is large enough so the afterglow emission will not violate the X-ray and radio observations. However, this configuration is also in tension with the observations. First, the compactness criterion that we used in order to constrain the off-axis emission (see above) shows that material with low Lorentz factor that is observed off-axis cannot have a high amplification factor A . Namely it must have low luminosity. For example a source with $\Gamma \approx 10$ is limited to $A \approx 20$, or a total isotropic equivalent energy of $\sim 6 \times 10^{47}$ erg as seen by an on-axis observer. Such low energy material is again expected to be suppressed by the cocoon. Moreover, observations of short GRBs do not support a structured jet with a luminosity that gradually drops at the wings. The reason is that with such a structure we would expect to detect at least some sGRBs where the γ -rays are generated by the low-luminosity wings that point towards us. The afterglows from these GRBs would have shown after a day or so the signature of an off-axis jet that carries significantly more energy than the one observed in γ -rays, once the emission becomes dominated by the high energy core. Such short GRBs are not observed (see for example a compilation of sGRB prompt and afterglow properties by (32)).

We conclude that while in principle the observed γ -rays may have been generated by low-luminosity low-Lorentz factor wings of a jet seen off-axis, current observations and theory disfavor this possibility.

A Newtonian γ -ray source

Assume that the γ -ray source is Newtonian. The optical depth of the source, due to produced pairs, can be estimated using equation S5 with $L_{51} = 10^{-5} - 10^{-4}$ (3,4) and $\delta_{t,-2} \approx 100$. Thus, if $\Gamma = 1$ the source is extremely opaque. If we assume the maximal possible radius given the burst duration $\sim 3 \times 10^{10}$ cm, the lower limit on the optical depth at the source is $\approx 10^5 - 10^6$. Such a large optical depth is unrealistic for many reasons. For example, the observed spectrum below E_p is much shallower (softer) than a blackbody, while the spectrum of such a source is

expected to be a blackbody or a Wein (3, 4). Another problem is the implied diffusion time. The burst duration must be shorter than the diffusion time, which with this optical depth implies that the width of the emitting region cannot exceed $\sim 10^5$ cm during the entire emission. Such a narrow non-expanding emitting region is not expected in ejecta that expands at sub relativistic velocities at a radius of $\sim 3 \times 10^{10}$ cm.

Thus, we conclude that the γ -ray source must have a low optical depth. Equation S5 shows that $\Gamma = 2 - 3$ (mildly relativistic) is sufficient for an optically thin source.

A Mildly Relativistic Shock Breakout of a Cocoon

When a fast shock propagates in a medium with a high optical depth it is dominated by radiation. The shock breaks out once the optical depth drops so it cannot confine the radiation within the shock layer and it escapes to infinity. The theory of relativistic shock breakout was developed in the context of a shock that propagates in a star (119, 120) where the unshocked material is static and the stellar structure dictates its propagation. In the scenario of a breakout from the ejecta of a binary neutron star merger the shock breaks out of expanding material, which has a different density profile than a star. Nevertheless, since the pulse of radiation that is emitted upon the shock breakout is dominated by the radiation generated within a very thin layer with an optical depth of unity, its properties depend almost entirely on two physical parameters: the shock Lorentz factor, Γ_{bo} , and the breakout radius, R_{bo} . Thus, we can use the derivation of (120) to test whether a shock breakout can produce the observed signal, and if it does then to estimate its properties.

Not every flare of γ -rays can be generated by a relativistic shock breakout. First, shock breakouts do not produce flares with a highly variable temporal structure. This by itself implies that almost all GRBs (short and long) cannot be generated by shock breakouts. Second, the three main observables of the flare: energy, E_{bo} , duration t_{bo} and temperature, T_{bo} (note that

the spectrum is not expected to be a blackbody, and T_{bo} is just the typical photon energy), depend only on two physical parameters, Γ_{bo} and R_{bo} . Therefore they must roughly satisfy a closure relation (equation 18 in (120)):

$$t_{\text{bo}} \sim 1 \text{ s} \left(\frac{E_{\text{bo}}}{10^{46} \text{ erg}} \right)^{1/2} \left(\frac{T_{\text{bo}}}{150 \text{ keV}} \right)^{-\frac{9+\sqrt{3}}{4}} \quad (\text{S7})$$

The flare of γ -rays that followed EM170817 (3, 4), which released $E_{\text{bo}} \approx 4 \times 10^{46} \text{ erg}$ over a duration of $t_{\text{bo}} \sim 1 - 2 \text{ s}$ at a typical photon energy of $T_{\text{bo}} \sim 100 - 150 \text{ keV}$, satisfies the relation. Again, almost all the regular GRBs (short and long) do not satisfy this relation. They are too energetic and soft for their duration. The only type of GRB that satisfies equation S7 and shows a non-variable light curves are low-luminosity GRBs, for which we have strong evidence that the γ -rays are generated by a mildly relativistic shock breakout (121).

Using any two of the three equations 14, 16 17 from (120) we can find that if a shock breakout is the source of the γ -rays that followed GW170817 then $R_{\text{bo}} \sim 3 \times 10^{11} \text{ cm}$ and $\Gamma_{\text{bo}} \approx 2 - 3$. Note, that equation S7 and the estimates of the breakout parameters both assume that the shock breakout takes place over a relatively wide angle ($> 20^\circ$) that includes the observer's line-of-sight. This implies that in the case of EM170817 the cocoon breakout must have taken place over a wide angle of at least $0.5-1 \text{ rad}$ if it was the source of γ -ray emission.

Hydrodynamical Simulation Details of A Cocoon Breakout

To verify that a model of a cocoon driven by a choked jet can explain the full range of electromagnetic observations, we carry out 2D relativistic hydrodynamic simulations, followed by a post-processing calculation of the UV/Optical/IR emission during the expansion of the cocoon and the ejecta. We search for a model in which the delay between the merger and the observed photons from the breakout is 2 s (3, 4) and that its breakout radius and velocity match those that we calculate above. Note that we do not directly calculate the γ -ray signal since the breakout

takes place over a scale that is much smaller than the scales that our simulation can resolve. However, the model is required to produce UV/Optical/IR signal that fits the observations.

For the 2D relativistic hydrodynamic simulations we use the public code PLUTO (122). The initial configuration at $t = 0$ (defined as the merger time) is cold ejecta that expands radially, which is present from the base of the grid at $r_{\text{esc}} = 4 \times 10^8$ cm up to $r_{\text{max}} = 2 \times 10^9$ cm. The ejecta have an angular profile, where most of the mass (75%) is near the equator at $\theta > 1.0$ rad, where θ is the polar angle. The ejecta are also divided in the radial direction into two regions (with similar angular profiles) – a massive slow core that extends at $t = 0$ up to $r_c = 1.3 \times 10^9$ cm and low-mass fast material that extends at $t = 0$ between r_c and 2×10^9 cm. The density profile of the dense core is:

$$\rho_{\text{core}}(r, \theta) = \rho_0 r^{-2} \left(\frac{1}{4} + \sin^3 \theta \right), \quad (\text{S8})$$

where ρ_0 is the normalization which is chosen to fix the total ejecta mass. The velocity profile of the core is

$$v_{\text{core}}(r) = v_{\text{c,max}} \frac{r}{r_c}, \quad (\text{S9})$$

where $v_{\text{c,max}} = 0.2c$ is the maximal velocity of the ejecta's inner part. The extended ejecta density profile is chosen as a very steep power-law in v between $v_{\text{c,max}}$ and $0.8c$ so its total mass is 1% of the core mass and the mass carried by material at $v > 0.7c$ is about 10^{-5} of the total ejecta mass. The jet is injected into the ejecta with a delay of 1 s for a total working time of 2 s and a total luminosity of L_j . The jet is injected with a specific enthalpy of 20 at an opening angle of 0.7 rad from a nozzle at the base of the grid with a size of 10^8 cm. We search for a model that fits the evolution of the bolometric luminosity and temperature fitted to the UV/optical/IR data by varying the total ejecta mass, namely ρ_0 , and the jet's luminosity, L_j . We find reasonable fits with ejecta masses larger than $0.05 M_\odot$ and jet luminosities that release an energy that is comparable or a bit larger than the total ejecta kinetic energy. The specific model presented in the paper (figs 2 and 6) and which is discussed below has a total ejecta mass of $0.1 M_\odot$ and jet

luminosity $L_j = 2.6 \times 10^{51} \text{ erg s}^{-1}$.

Given its large opening angle the jet is not collimated. Instead it works its way through a large amount of ejecta dissipating its energy in the process, forming a cocoon. The jet injection stops at 3 s and by $t \approx 4 \text{ s}$ the jet is fully choked, leaving a hot cocoon that continues to propagate driving a mildly relativistic ($\Gamma \approx 2 - 3$) shock into the ejecta. About 10 s after the merger the shock catches up with the leading edge of the ejecta and breaks out at a radius of $R_{\text{bo}} = 2.4 \times 10^{11} \text{ cm} = 8 \text{ light-seconds}$. Thus, photons released during the cocoon shock breakout are only 2 s behind the gravitational waves released at the merger, thereby consistent with the delay between the merger and γ -rays observed by Fermi (3, 4). The breakout also takes place at a radius and velocity that is expected to produce a signal consistent with EM170817.

We end the simulation at $t = 15 \text{ s}$ when all the expansion is homologous and all the material moves ballistically. The emission after the breakout is calculated as a post-processing of the final snapshot of the hydrodynamical simulation, following a similar procedure to that described in (29). It contains two components: (i) diffusion of photons that were deposited by the shock that crossed the ejecta, which we call “cooling emission”, and (ii) radioactive decay of the elements that were synthesized in the ejecta, termed “macronova”. In short, for each time step in the lab frame we calculate first the radial optical depth from every radius to infinity along a radial path. We do that for different angles and we determine the trapping radius, $r_t(\theta)$, where the optical depth $\tau(r_t(\theta)) = c/v$. Above this radius, photons diffuse freely to the observer at infinity while below this radius they are trapped. This is an approximation since the outflow is not spherically symmetric. In a similar manner, we calculate for each angle the photospheric radius $r_{\text{ph}}(\theta)$ for which $\tau(r_{\text{ph}}(\theta)) = 1$. To obtain an approximated calculation that includes correction due to the mildly relativistic motion, we first calculate the luminosity in the comoving frame. The cooling emission luminosity in a comoving frame is determined by the diffusion of the rest frame energy flux at the trapping radius of the radiation that was carried by

the outflow from the last hydrodynamical snapshot. The macronova emission arises from the radioactive heating generated by all the material above the trapping radius, $m(r > r_t)$, and is estimated at the rest frame of the photosphere as $\dot{\epsilon} = m(r > r_t)\epsilon_0 10^{10} \left(\frac{t}{1\text{d}}\right)^{-1.3} \text{ erg s}^{-1}$, where ϵ_0 is of order unity (123). Following (111) we take $\epsilon_0 = 2$ during the first two days and reduce it to $\epsilon_0 = 1.5$ afterwards.

Next, we estimate the rest frame temperature at $r_{\text{ph}}(\theta)$ by taking for each direction the rest frame luminosity (the sum of cooling and macronova emission) and finding the radiation energy density at the photosphere assuming that the radiation is in thermal equilibrium and that the local radiation spectrum is a blackbody at this point. We assume that this blackbody radiation is emitted isotropically at the matter's rest frame of the photosphere. Having the rest frame luminosity and spectrum along each angle at every time in the explosion frame, we integrate the contribution from material at all angles for observers at different viewing angles at different observer times, by properly accounting for the Lorentz boost and the light travel time.

Finally, in order to find the ejecta optical depth at each time and place we need to estimate its opacity. For that we use tracers which mark material that is ejected initially (at $t = 0$) at different angles. By looking at the velocity distribution of the tracers at the end of the simulation we find that material that was ejected initially near the equator is associated with the slowest velocities ($v/c < 0.1$) while material that was ejected initially at high latitudes is associated with faster material. This is not surprising given that the energy of the jet was mostly deposited at high latitude material. Following (111) we adopt an opacity $\kappa = 10 \text{ cm}^2 \text{ g}^{-1}$ for material slower than $0.1c$, which is presumably dominated by neutron rich dynamical ejecta that contains Lanthanides, and $\kappa = 1.0 \text{ cm}^2 \text{ g}^{-1}$ for material that is faster than $0.1c$ which was presumably ejected from the disk and/or the massive neutron star that were formed after the merger and does not contain r-process elements from the second and third peaks.

Throughout the simulations we applied an ideal gas equation of state with an adiabatic

index of $4/3$ as appropriate for a radiation-dominated gas, and neglect gravity given that kinetic energy dominates the ejecta in the simulation domain. For the integration an HLL Riemann solver and a third order Runge Kutta time-stepping have been used. We employed a cylindrical grid with 1620×1600 cells. The grid is divided in three patches on the x -axis and two on the z -axis (parallel to the jet axis). The innermost patch on the x -axis is stretching from the origin to $x = 2 \times 10^8$ cm with 20 cells uniformly distributed, this patch makes sure the jet's nozzle contains enough cells. Most of the cocoon forms and experiences the mixing up to $x = 2 \times 10^{10}$ cm and $z = 2 \times 10^{10}$ cm. In this region we employ a resolution of 800 cells on each axis. Outside of these coordinates, the grid contains a uniform distribution of 800 additional cells in each axis up to $x = 4 \times 10^{11}$ cm and $z = 4 \times 10^{11}$ cm.

Early-time emission powered by an engine-driven wind

In the main paper we proposed two options to explain bright and blue emission seen on the first day. Both options rely on radio-active heating (one involved mildly relativistic material and the other material with relatively low opacity) to power the emission. Here we suggest a third possibility: the release of internal energy that was deposited in the ejecta by an engine-driven wide-angle wind that lasted for ~ 20 s.

In the cocoon model that we presented above, the cooling emission fades within hours and does not contribute to the observed emission. The energy is deposited by the jet over a short duration when the ejecta radius is small. Then adiabatic losses cool the radiation by the time that the radiation is emitted. This can be shown using the following simple arguments. Assume that energy is deposited at radius R_0 in a mass M . This energy is deposited by a strong shock so about half of it is deposited in the form of radiation while the other half accelerates the mass to a velocity $v = \beta c$. The radiation is released at the time t_{rad} given in equation S12 at a radius $R_{\text{rad}} \approx vt_{\text{rad}}$ after adiabatic losses have reduced the internal energy to MvR_0/t_{rad} and

the luminosity is $L \sim MvR_0/t_{\text{rad}}^2$. Then using equation S12 for t_{rad} we find:

$$L \approx 6 \times 10^{40} \text{ erg s}^{-1} \kappa^{-1} \frac{R_0}{10^{10} \text{ cm}} \left(\frac{\beta}{0.2} \right)^2 \quad (\text{S10})$$

independent of the mass. We observed a luminosity of 10^{42} erg implying that in order to explain the early emission as shock cooling, the shock should hit the ejecta at a radius of $\sim 10^{11}$ cm. Since the ejecta propagates at a velocity that does not exceed $\sim 0.2c$ it should be shocked ~ 20 s after the merger. Such an option is plausible given that we know that in some sGRBs there is engine activity that releases an amount of energy that is comparable to the one seen in the burst over a duration of ~ 100 s (31).

To verify our simple estimates we carried out a 1D numerical simulation with spherical symmetry (using the same code as in section where we inject an engine-driven wind that lasts for 20 s and contains a total energy of 2×10^{51} erg into $0.05 M_\odot$ of ejecta that expands initially at a velocity of $0.1 - 0.2c$. We found that this can produce the observed emission during the first day for $\kappa \approx 3 \text{ cm}^2 \text{ g}^{-1}$. We conclude that long-lasting engine-driven wind is another possible explanation for the bright, blue emission of EM170817 seen during the first day.

Early-time emission powered by free neutron decay

The observed emission during the first day is brighter, bluer and rises faster than predicted. It is not naturally explained by the standard models of radio-active decay of r-process elements (see main text). It was suggested (124) that the decay of free neutrons may give rise to an early blue emission. We therefore examine if decay of free neutrons may have made a significant contribution to the UV/optical emission observed during the first day.

Consider an outflow with a mass $m = 0.01 M_\odot m_{-2}$, a typical velocity $v = 0.5c\beta_{0.5}$ and an initial free neutron fraction X_n . The evolution of internal energy confined to the flow, E , can be estimated as:

$$\frac{dE}{dt} = \frac{E}{t} + L_h - L_{\text{rad}} \quad (\text{S11})$$

The first term takes into account adiabatic losses, the second heating term is due to neutron decay, $L_h = 6 \times 10^{45} m_{-2} X_n e^{(-t/900\text{s})} \text{ erg s}^{-1}$, and the cooling term L_{rad} accounts for radiative losses. The trapped radiation is released roughly at

$$t_{\text{rad}} \approx \left(\frac{\kappa m}{4\pi c v} \right)^{1/2} = 0.7 m_{-2}^{0.5} \kappa^{0.5} \beta_{0.5}^{-0.5} \text{ day}, \quad (\text{S12})$$

where opacity κ is in $\text{cm}^2 \text{ g}^{-1}$. Up to $t \ll t_{\text{rad}}$ equation S11 can be integrated neglecting radiative losses. For $900\text{s} \ll t \ll t_{\text{rad}}$ this integration yields $E = 6 \times 10^{46} m_{-2} X_n t_d^{-1} \text{ erg}$, where t_d is time in days. The trapped radiation is radiated at t_{rad} with a peak luminosity that is roughly $L_{\text{peak}} \approx E/t_{\text{rad}}$.

$$L_{\text{peak}} \approx \frac{E(t_{\text{rad}})}{t_{\text{rad}}} \approx 2 \times 10^{42} X_n \kappa^{-1} \beta_{0.5} \text{ erg s}^{-1} \quad (\text{S13})$$

Note that this luminosity is independent of m . The observed luminosity during the first day implies that for $\kappa = 1 \text{ cm}^2 \text{ g}^{-1}$, X_n is 0.5 and the ejecta must be at least $\sim 0.01 M_\odot$ of almost pure free neutrons. For larger κ neutrons cannot produce the observed signal while lower κ reduces the neutron fraction, while increasing the total mass by the same factor (to match t_{rad}), so an unrealistically high mass of $\sim 0.01 M_\odot$ of free neutrons is always needed to explain the observations from the first day.

Rates

EM170817-like events in the Palomar Transient Factory database

The Palomar Transient Factory (PTF; (125)) and intermediate Palomar Transient Factory (iPTF; (126, 127)) databases keep track of every detection with significance greater than $5\text{-}\sigma$ on every image subtraction performed during the 7 year surveys. This facilitates our ability to calculate the rates of a variety of astrophysical events in hindsight. We determined the efficiency of every image subtraction for a transient of a given magnitude sitting on top of a galaxy of a given surface brightness for the PTF survey over the time frame of 2010 January through 2012 December (128). By coupling these efficiencies with a Monte Carlo simulation of a particular transient event, we can calculate a rate based on comparison to the observed number of such transients found during the survey or, if no such events were found, we can provide an upper limit on this rate.

We used these efficiencies, coupled with the lightcurve for EM170817 to calculate the rate in the following manner. First we performed a search in R -band for all transients resembling EM170817. We only performed the search within the search radius of the CLU (Census of the Local Universe; (7)) galaxy catalog within 200 Mpc as defined in (73). We required 3 detections above our machine-learning threshold for a real source (129) found within a 10-day time frame with at least one non-detection both the week prior to the event and the week after the event. No other significant detections in the database were allowed at any time during the survey.

The result of this search yielded 2 potential candidate events, one of which is almost certainly a heretofore unreported nova in NGC 253. The other event, similar in absolute brightness and decline rate as EM170817, will be the subject of a detailed rate study in future work (Frohmaier et al., 2018 in preparation). For now we will assume there are no positive detections of such events in PTF and proceed to calculate an upper limit for this rate.

From here we simulated, through a Monte Carlo, the lightcurves of EM170817 as seen in

our survey and if they would meet the required detection thresholds as defined above. The result of this simulation is an event rate of $320 \text{ Gpc}^{-3} \text{ yr}^{-1}$ and a $3\text{-}\sigma$ upper limit of $800 \text{ Gpc}^{-3} \text{ yr}^{-1}$. Relating this back to the optical counterparts of NS-NS mergers, we note that the major uncertainty in all of this is the luminosity function in the R -band of such events. If the typical NS-NS merger is 50% fainter, the upper limit on such events nearly doubles to over $1600 \text{ Gpc}^{-3} \text{ yr}^{-1}$.

A similar search was carried out in the iPTF database yielding no corresponding detections using the techniques reported in (130). While the iPTF survey had a much higher cadence than PTF, and should be better suited for the optical detection of rapidly-evolving events like EM170817, we have yet to carry out a full study of the iPTF subtraction efficiencies, thus we do not include this survey in our constraints on the rates. However, we do note that this would make the rate reported above very conservative.

Implications for rates based on r-process abundances

Here we discuss the relation of GW/EM170817 to the origin of r-process elements in the Universe. The mass of the ejected r-process elements is estimated to be at least $\sim 0.05 M_{\odot}$ in order to explain the observed light curves and spectra. The bright emission at early times suggests that the Lanthanide-free material with a mass of $> 0.02 M_{\odot}$ is ejected (with atomic mass number $A < 140$; see figure S10). Given the ejecta mass and merger rate deduced above, we can test the hypothesis that mergers produced all the r-process elements heavier than a minimal atomic mass number, $A_{\text{min}} > 70$, in the Milky Way. The value of A_{min} for the merger ejecta depends on the stiffness of the neutron star equation of state (131, 132) and the lifetime of the remnant massive neutron star (133), see also recent studies on the nucleosynthesis in the merger ejecta (134, 135). Note that $\sim 80\%$ of r-process elements are around the first r-process peak (figure S10). Therefore the rate estimate from the Galactic r-process abundance is quite sensitive to the choice of A_{min} . Assuming that the solar r-process abundance is the typical of

the Milky Way stars, we estimate the volumetric rate (*136*):

$$R \sim \begin{cases} 500 \left(\frac{M_{\text{ej}}}{0.05 M_{\odot}} \right)^{-1} \text{ Gpc}^{-3} \text{ yr}^{-1} & (A_{\text{min}} = 70), \\ 100 \left(\frac{M_{\text{ej}}}{0.05 M_{\odot}} \right)^{-1} \text{ Gpc}^{-3} \text{ yr}^{-1} & (A_{\text{min}} = 90), \end{cases} \quad (\text{S14})$$

where we use the number density of galaxies of $\approx 0.01 \text{ Mpc}^{-3}$. The former corresponds to that all the r-process elements are produced by mergers and the latter corresponds to that heavy r-process elements without the first peak elements are produced. The large event rate and ejecta mass inferred from GW/EM170817 suggest that all the r-process elements are predominantly produced by mergers. Note that, however, the abundance pattern of the first peak elements of extremely metal poor stars does not agree with each other (*137*). This suggests that more than one type of astrophysical phenomenon may produce these elements or there is variation in the composition and amount of the r-process ejecta of neutron star mergers.

Additional Acknowledgements

Gemini observatory data were obtained primarily under programs GS-2017B-DD-1 and GS-2017B-DD-6 (PI L. P. Singer) and is available at <https://archive.gemini.edu>. CTIO1.3m data obtained under program NOAO 2017B-0160 (PI B. Cobb) is available at <http://archive.noao.edu/>. Hubble Space Telescope data obtained under program HST-GO-15436 (PI M. M. Kasliwal) is available at <https://archive.stsci.edu/>. Keck Observatory data (PI G. Hallinan) is available at <https://koa.ipac.caltech.edu/>. VLT data is available at <http://archive.eso.org/>.

The data of GALEX presented in this paper were obtained from the Mikulski Archive for Space Telescopes (MAST). STScI is operated by the Association of Universities for Research in Astronomy, Inc., under NASA contract NAS5-26555. Support for MAST for non-HST data is provided by the NASA Office of Space Science via grant NNX09AF08G and by other grants and contracts PS1: The Pan-STARRS1 Surveys (PS1) have been made possible through contributions of the Institute for Astronomy, the University of Hawaii, the Pan-STARRS Project Office, the Max-Planck Society and its participating institutes, the Max Planck Institute for Astronomy, Heidelberg and the Max Planck Institute for Extraterrestrial Physics, Garching, The Johns Hopkins University, Durham University, the University of Edinburgh, Queen's University Belfast, the Harvard-Smithsonian Center for Astrophysics, the Las Cumbres Observatory Global Telescope Network Incorporated, the National Central University of Taiwan, the Space Telescope Science Institute, the National Aeronautics and Space Administration under Grant No. NNX08AR22G issued through the Planetary Science Division of the NASA Science Mission Directorate, the National Science Foundation under Grant No. AST-1238877, the University of Maryland, and Eotvos Lorand University (ELTE). 2MASS: This publication makes use of data products from the Two Micron All Sky Survey, which is a joint project of the University of Massachusetts and the Infrared Processing and Analysis Center/California Institute of Tech-

nology, funded by the National Aeronautics and Space Administration and the National Science Foundation. WISE: This publication makes use of data products from the Wide-field Infrared Survey Explorer, which is a joint project of the University of California, Los Angeles, and the Jet Propulsion Laboratory/California Institute of Technology, funded by the National Aeronautics and Space Administration. This research has made use of the NASA/IPAC Extragalactic Database (NED) which is operated by the Jet Propulsion Laboratory, California Institute of Technology, under contract with the National Aeronautics and Space Administration.

A.H. acknowledges support by the I-Core Program of the Planning and Budgeting Committee and the Israel Science Foundation. T.M. acknowledges the support of the Australian Research Council through grant FT150100099. Parts of this research were conducted by the Australian Research Council Centre of Excellence for All-sky Astrophysics (CAASTRO), through project number CE110001020. The Australia Telescope Compact Array is part of the Australia Telescope National Facility which is funded by the Australian Government for operation as a National Facility managed by CSIRO. D.L.K. is additionally supported by NSF grant AST-1412421. A.A.M. is funded by the Large Synoptic Survey Telescope Corporation in support of the Data Science Fellowship Program. P.C.Y., C.C.N. and W.H.I. thank the support from grant MOST104-2923-M-008-004-MY5 and MOST106-2112-M-008-007. A.C. acknowledges support from the National Science Foundation CAREER award 1455090, “CAREER: Radio and gravitational-wave emission from the largest explosions since the Big Bang”. T.P. acknowledges the support of Advanced ERC grant TReX and the Templeton Foundation. B.E.C. thanks SMARTS 1.3-m Queue Manager Bryndis Cruz for prompt scheduling of the SMARTS observations. Basic research in radio astronomy at the Naval Research Laboratory (NRL) is funded by 6.1 Base funding. Construction and installation of VLITE was supported by NRL Sustainment Restoration and Maintenance funding. K.P.M’s research is supported by the Oxford Centre for Astrophysical Surveys which is funded through the Hintze Family Charitable Foundation. J.S.

and A.G. are grateful for support from the Knut and Alice Wallenberg Foundation. Together with S.R they are also supported by the research environment grant “Gravitational Radiation and Electromagnetic Astrophysical Transients (GREAT)” funded by the Swedish Research Council (VR) under Dnr 2016-06012. S.R. has also been supported by VR (grant number 2016-036573), and by the Swedish National Space Board (107/16). E.O.O. is grateful for the support by grants from the Israel Science Foundation, Minerva, Israeli ministry of Science, the US-Israel Binational Science Foundation, and the I-CORE Program of the Planning and Budgeting Committee and The Israel Science Foundation. We thank the staff of the GMRT that made these observations possible. The GMRT is run by the National Centre for Radio Astrophysics of the Tata Institute of Fundamental Research. A.Y.Q.H. was supported by a National Science Foundation Graduate Research Fellowship under Grant No. DGE1144469. J.E.J. acknowledges supported by the National Science Foundation Graduate Research Fellowship under grant no. DGE-1144469. S.G. acknowledges support from NSF Award PHY-1607585. G.C.A. and V.B. acknowledge the support of the Science and Engineering Research Board, Department of Science and Technology, India, for the GROWTH-India project. J.B. acknowledges support from the Einstein Fellowship grant PF7-180162. N.K., R.I. and Y.Y. acknowledge the support of Japan Society for the Promotion of Science for the GROWTH project. CZTI is built by a TIFR-led consortium of institutes across India, including VSSC, ISAC, IUCAA, SAC and PRL. The Indian Space Research Organisation funded, managed and facilitated the project. Parts of this research were conducted by the Australian Research Council Centre of Excellence for All-sky Astrophysics in 3D (ASTRO 3D) through project number CE170100013. F.R. acknowledges support from the U.S. Department of Energy Early Career Award DE-SC0012160 “Scalable and Energy-Efficient Methods for Interactive Exploration of Scientific Data.” E.N. and O.G. acknowledge the support of an ERC starting grant (GRB/SN) and an ISF grant (1277/13). P.E.N. acknowledges support from the DOE through DE-FOA-0001088, “Analytical Modeling

for Extreme-Scale Computing Environments.” This research used resources of the National Energy Research Scientific Computing Center, a DOE Office of Science User Facility supported by the Office of Science of the U.S. Department of Energy under Contract No. DE-AC02-05CH11231.

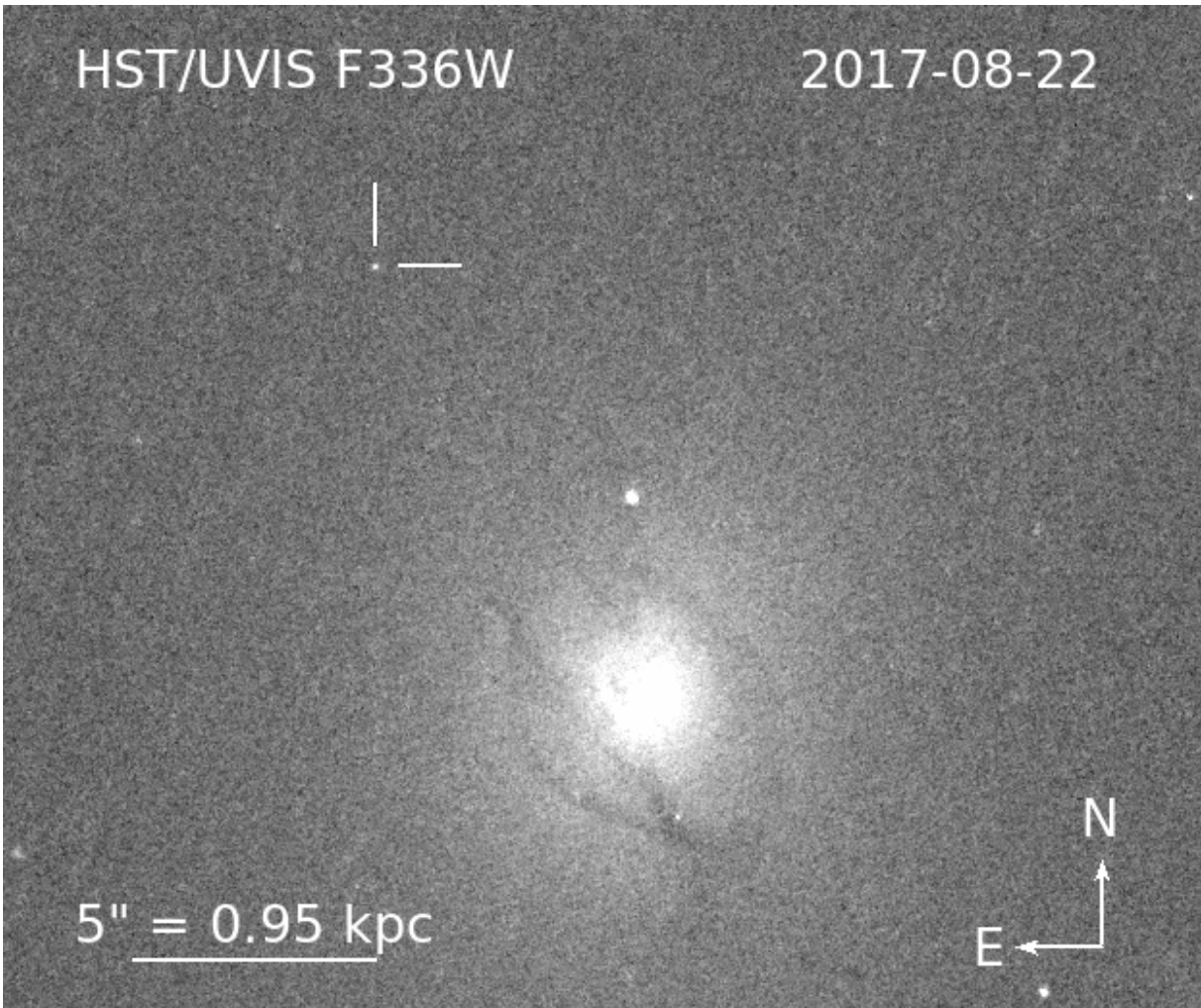


Figure S1: *Hubble Space Telescope* WFC3/F336W ultraviolet image of EM170817 and NGC 4993, taken 2017 August 22. North is up, east is the to left, and a 5'' scale-bar is indicated. The position of the transient is shown with tick marks. Dust lanes are visible toward the center of NGC 4993.

Table S1: Archival and new ultraviolet, optical, and near-infrared photometry of EM170817. For each observation we give the observation date, time since GW170817, telescope, instrument, filter, and AB magnitude. Upper limits are all at 5- σ confidence.

Observation Date (UTC)	Δt (d)	Telescope	Instrument	Filter	AB Magnitude	Reference
2017-08-17 23:31	0.45	Swope	directCCD	<i>i</i>	17.33 ± 0.10	(10, 146, 147)
2017-08-18 00:01	0.47	PROMPT5	CCD	<i>R</i>	17.52 ± 0.20	(148, 149)
2017-08-18 00:04	0.47	CTIO	DECam	<i>i</i>	17.50 ± 0.10	(150, 151)
2017-08-18 00:04	0.47	CTIO	DECam	<i>z</i>	17.50 ± 0.10	(150, 151)
2017-08-18 00:10	0.48	ESO-VISTA	VIRCAM	<i>J</i>	18.42 ± 0.10	(152)
2017-08-18 00:15	0.48	Magellan-Clay	MEGACAM	<i>g</i>	17.20 ± 0.10	(147, 153)
2017-08-18 01:30	0.53	Gemini-S	FLAMINGOS-2	<i>K_s</i>	18.42 ± 0.04	this paper
2017-08-18 03:44	0.63	<i>Swift</i>	UVOT	UVM2	21.32 ± 0.22	(11)
2017-08-18 03:54	0.63	<i>Swift</i>	UVOT	UVW1	19.62 ± 0.11	(11)
2017-08-18 04:01	0.64	<i>Swift</i>	UVOT	<i>U</i>	18.23 ± 0.08	(11)
2017-08-18 04:07	0.64	<i>Swift</i>	UVOT	UVW2	21.48 ± 0.25	(11)
2017-08-18 05:33	0.70	Pan-STARRS	GPC1	<i>y</i>	17.28 ± 0.13	(154, 155)
2017-08-18 05:33	0.70	Pan-STARRS	GPC1	<i>z</i>	17.31 ± 0.09	(154, 155)
2017-08-18 05:34	0.70	Pan-STARRS	GPC1	<i>i</i>	17.23 ± 0.10	(154, 155)
2017-08-18 05:35	0.70	Pan-STARRS	GPC1	<i>y</i>	17.47 ± 0.16	(154, 155)
2017-08-18 05:36	0.71	Pan-STARRS	GPC1	<i>z</i>	17.21 ± 0.08	(154, 155)
2017-08-18 05:37	0.71	Pan-STARRS	GPC1	<i>i</i>	17.26 ± 0.08	(154, 155)
2017-08-18 05:40	0.71	Subaru	HSC	<i>z</i>	17.30 ± 0.10	(156)
2017-08-18 09:42	0.88	SSO	CCD	<i>g</i>	17.50 ± 0.20	(157)
2017-08-18 13:39	1.04	<i>Swift</i>	UVOT	UVW1	20.36 ± 0.21	(11)
2017-08-18 13:43	1.04	<i>Swift</i>	UVOT	<i>U</i>	19.05 ± 0.16	(11)
2017-08-18 13:48	1.05	<i>Swift</i>	UVOT	UVW2	> 21.19	(11)
2017-08-18 14:11	1.06	AST3-2	CCD	<i>g</i>	18.15 ± 0.10	(158, 159)
2017-08-18 14:15	1.07	<i>Swift</i>	UVOT	UVM2	> 21.25	(11)
2017-08-18 17:17	1.19	KMTNet	18KCCD	<i>V</i>	17.83 ± 0.10	(160, 161)
2017-08-18 17:17	1.19	KMTNet	18KCCD	<i>I</i>	17.75 ± 0.10	(160, 161)
2017-08-18 17:17	1.19	KMTNet	18KCCD	<i>R</i>	17.62 ± 0.10	(160, 161)
2017-08-18 17:17	1.19	MASTER-II	NA	<i>R</i>	17.42 ± 0.20	(162, 163)
2017-08-18 17:34	1.20	MASTER-II	NA	<i>B</i>	18.42 ± 0.10	(162, 163)
2017-08-18 20:42	1.33	NOT	NOTCam	<i>J</i>	17.13 ± 0.11	(164)
2017-08-18 20:42	1.33	NOT	NOTCam	<i>K_s</i>	17.70 ± 0.25	(164)
2017-08-18 23:45	1.46	KMTNet	18KCCD	<i>R</i>	17.82 ± 0.10	(160, 161)
2017-08-18 23:46	1.46	KMTNet	18KCCD	<i>I</i>	17.85 ± 0.10	(160, 161)
2017-08-18 23:46	1.46	KMTNet	18KCCD	<i>V</i>	18.33 ± 0.10	(160, 161)
2017-08-18 23:59	1.47	PROMPT5	CCD	<i>R</i>	18.22 ± 0.06	(149, 165)
2017-08-19 00:44	1.50	<i>Swift</i>	UVOT	<i>U</i>	> 19.50	(11)
2017-08-19 00:50	1.51	<i>Swift</i>	UVOT	UVW2	> 21.53	(11)
2017-08-19 01:15	1.52	<i>Swift</i>	UVOT	UVM2	> 21.71	(11)

Table S1: Archival and new ultraviolet, optical, and near-infrared photometry of EM170817 (continued).

Observation Date (UTC)	Δt (d)	Telescope	Instrument	Filter	AB Magnitude	Reference
2017-08-19 01:23	1.53	<i>Swift</i>	UVOT	UVW1	> 20.86	(11)
2017-08-19 01:55	1.55	Swope	directCCD	<i>B</i>	18.70 ± 0.10	(10, 147, 166)
2017-08-19 01:55	1.55	Swope	directCCD	<i>V</i>	18.14 ± 0.10	(10, 147, 166)
2017-08-19 01:55	1.55	Swope	directCCD	<i>i</i>	17.43 ± 0.10	(10, 147, 166)
2017-08-19 05:39	1.71	Subaru	HSC	<i>z</i>	17.80 ± 0.10	(167)
2017-08-19 05:46	1.71	Pan-STARRS	GPC1	<i>i</i>	17.91 ± 0.05	(155, 168)
2017-08-19 05:46	1.71	Pan-STARRS	GPC1	<i>y</i>	17.59 ± 0.07	(155, 168)
2017-08-19 05:46	1.71	Pan-STARRS	GPC1	<i>z</i>	17.80 ± 0.05	(155, 168)
2017-08-19 10:59	1.93	Zadko	AndorIKON-L	<i>r</i>	18.46 ± 0.17	(159, 169)
2017-08-19 14:09	2.06	<i>Swift</i>	UVOT	<i>U</i>	> 21.02	(11)
2017-08-19 14:17	2.07	<i>Swift</i>	UVOT	UVW2	> 21.55	(11)
2017-08-19 14:25	2.07	<i>Swift</i>	UVOT	UVM2	> 21.59	(11)
2017-08-19 14:33	2.08	<i>Swift</i>	UVOT	UVW1	> 21.57	(11)
2017-08-19 17:17	2.19	KMTNet	18KCCD	<i>R</i>	18.52 ± 0.10	(160, 161)
2017-08-19 17:17	2.19	KMTNet	18KCCD	<i>V</i>	19.43 ± 0.10	(160, 161)
2017-08-19 17:17	2.19	KMTNet	18KCCD	<i>I</i>	18.35 ± 0.10	(160, 161)
2017-08-19 17:53	2.22	MASTER-II	NA	<i>R</i>	18.42 ± 0.30	(162, 163)
2017-08-19 23:23	2.45	CTIO	DECam	<i>i</i>	17.80 ± 0.10	(151, 170, 171)
2017-08-19 23:23	2.45	CTIO	DECam	<i>z</i>	17.60 ± 0.10	(151, 170, 171)
2017-08-19 23:31	2.45	KMTNet	18KCCD	<i>R</i>	18.62 ± 0.10	(160, 161)
2017-08-19 23:31	2.45	KMTNet	18KCCD	<i>I</i>	18.65 ± 0.10	(160, 161)
2017-08-19 23:31	2.45	KMTNet	18KCCD	<i>V</i>	19.83 ± 0.10	(160, 161)
2017-08-19 23:50	2.46	PROMPT5	CCD	<i>r</i>	18.96 ± 0.10	(149, 172)
2017-08-20 00:19	2.49	Gemini-S	FLAMINGOS-2	K_s	17.60 ± 0.04	this paper
2017-08-20 00:27	2.49	Gemini-S	FLAMINGOS-2	<i>J</i>	17.76 ± 0.02	this paper
2017-08-20 05:46	2.71	Pan-STARRS	GPC1	<i>y</i>	18.08 ± 0.07	(155, 173)
2017-08-20 05:46	2.71	Pan-STARRS	GPC1	<i>i</i>	18.47 ± 0.08	(155, 173)
2017-08-20 05:46	2.71	Pan-STARRS	GPC1	<i>z</i>	18.31 ± 0.06	(155, 173)
2017-08-20 11:14	2.94	Zadko	AndorIKON-L	<i>r</i>	19.18 ± 0.12	(159, 169)
2017-08-20 11:47	2.96	<i>Swift</i>	UVOT	UVW1	> 22.18	(11)
2017-08-20 13:08	3.02	<i>Swift</i>	UVOT	<i>U</i>	> 21.87	(11)
2017-08-20 13:11	3.02	<i>Swift</i>	UVOT	<i>B</i>	> 19.82	(11)
2017-08-20 13:17	3.03	<i>Swift</i>	UVOT	UVW2	> 22.76	(11)
2017-08-20 13:25	3.03	<i>Swift</i>	UVOT	<i>V</i>	> 19.04	(11)
2017-08-20 15:11	3.10	<i>Swift</i>	UVOT	UVM2	> 23.29	(11)
2017-08-21 00:35	3.50	Gemini-S	FLAMINGOS-2	<i>J</i>	17.93 ± 0.06	this paper
2017-08-21 00:38	3.50	Gemini-S	FLAMINGOS-2	<i>H</i>	17.72 ± 0.04	this paper
2017-08-21 00:40	3.50	Gemini-S	FLAMINGOS-2	K_s	17.61 ± 0.06	this paper

Table S1: Archival and new ultraviolet, optical, and near-infrared photometry of EM170817 (continued).

Observation Date (UTC)	Δt (d)	Telescope	Instrument	Filter	AB Magnitude	Reference
2017-08-21 05:31	3.70	Pan-STARRS	GPC1	<i>y</i>	> 18.00	(155, 174)
2017-08-21 05:46	3.71	Pan-STARRS	GPC1	<i>z</i>	18.27 ± 0.33	(155, 174)
2017-08-21 05:46	3.71	Pan-STARRS	GPC1	<i>i</i>	> 18.50	(155, 174)
2017-08-21 09:30	3.87	Zadko	AndorIKON-L	<i>r</i>	19.86 ± 0.21	(159, 169)
2017-08-22 01:00	4.51	Gemini-S	FLAMINGOS-2	K_s	17.72 ± 0.09	this paper
2017-08-22 01:03	4.52	Gemini-S	FLAMINGOS-2	<i>J</i>	18.15 ± 0.06	this paper
2017-08-22 01:06	4.52	Gemini-S	FLAMINGOS-2	<i>H</i>	18.02 ± 0.07	this paper
2017-08-22 09:43	4.88	<i>Swift</i>	UVOT	UVW1	> 22.14	(11)
2017-08-22 11:43	4.96	Zadko	AndorIKON-L	<i>r</i>	20.20 ± 0.23	(159, 169)
2017-08-22 20:19	5.32	<i>HST</i>	WFC3/UVIS	F336W	24.97 ± 0.11	this paper
2017-08-22 20:28	5.32	<i>HST</i>	WFC3/UVIS	F336W	25.05 ± 0.11	this paper
2017-08-22 21:01	5.35	<i>HST</i>	WFC3/UVIS	F336W	25.18 ± 0.11	this paper
2017-08-22 23:23	5.45	ESO-VISTA	OMEGACAM	<i>i</i>	21.31 ± 0.10	(175)
2017-08-22 23:23	5.45	ESO-VISTA	OMEGACAM	<i>r</i>	22.43 ± 0.10	(175)
2017-08-22 23:23	5.45	ESO-VISTA	OMEGACAM	<i>g</i>	23.27 ± 0.10	(175)
2017-08-23 08:04	5.81	<i>Swift</i>	UVOT	<i>U</i>	> 20.74	(11)
2017-08-23 08:05	5.81	<i>Swift</i>	UVOT	<i>B</i>	> 19.94	(11)
2017-08-23 08:07	5.81	<i>Swift</i>	UVOT	UVW2	> 23.03	(11)
2017-08-23 08:09	5.81	<i>Swift</i>	UVOT	<i>V</i>	> 18.91	(11)
2017-08-23 08:11	5.81	<i>Swift</i>	UVOT	UVM2	> 22.66	(11)
2017-08-23 11:48	5.96	Zadko	AndorIKON-L	<i>r</i>	> 20.60	(159, 169)
2017-08-23 17:22	6.20	IRSF	SIRIUS	<i>H</i>	18.60 ± 0.18	this paper
2017-08-23 17:22	6.20	IRSF	SIRIUS	K_s	18.01 ± 0.10	this paper
2017-08-23 17:22	6.20	IRSF	SIRIUS	<i>J</i>	18.65 ± 0.19	this paper
2017-08-23 23:35	6.45	VLT	VISIR	$J8.9$	> 8.26	this paper
2017-08-24 11:55	6.97	Zadko	AndorIKON-L	<i>r</i>	> 20.60	(159, 169)
2017-08-24 16:51	7.17	IRSF	SIRIUS	<i>J</i>	18.95 ± 0.32	this paper
2017-08-24 16:51	7.17	IRSF	SIRIUS	<i>H</i>	18.53 ± 0.17	this paper
2017-08-24 16:51	7.17	IRSF	SIRIUS	K_s	18.02 ± 0.12	this paper
2017-08-24 23:20	7.44	CTIO1.3m	ANDICAM	<i>K</i>	18.06 ± 0.17	this paper
2017-08-25 11:52	7.97	Zadko	AndorIKON-L	<i>r</i>	> 20.60	(159, 169)
2017-08-25 16:42	8.17	<i>Swift</i>	UVOT	UVW1	> 22.51	(11)
2017-08-25 23:29	8.45	CTIO1.3m	ANDICAM	<i>K</i>	18.44 ± 0.18	this paper
2017-08-26 16:57	9.18	IRSF	SIRIUS	<i>H</i>	18.83 ± 0.23	this paper
2017-08-26 16:57	9.18	IRSF	SIRIUS	K_s	18.25 ± 0.21	this paper
2017-08-26 16:57	9.18	IRSF	SIRIUS	<i>J</i>	> 18.87	this paper
2017-08-26 22:56	9.43	Gemini-S	FLAMINGOS-2	K_s	18.50 ± 0.08	this paper
2017-08-26 23:01	9.43	Gemini-S	FLAMINGOS-2	<i>J</i>	20.57 ± 0.20	this paper

Table S1: Archival and new ultraviolet, optical, and near-infrared photometry of EM170817 (continued).

Observation Date (UTC)	Δt (d)	Telescope	Instrument	Filter	AB Magnitude	Reference
2017-08-26 23:05	9.43	Gemini-S	FLAMINGOS-2	<i>H</i>	19.68 ± 0.08	this paper
2017-08-26 23:21	9.44	CTIO1.3m	ANDICAM	<i>K</i>	18.43 ± 0.17	this paper
2017-08-27 02:15	9.57	APO	NICFPS	<i>K_s</i>	> 17.99	this paper
2017-08-27 02:49	9.59	Palomar5m	WHIRC	<i>K_s</i>	> 17.64	this paper
2017-08-27 23:07	10.43	Gemini-S	FLAMINGOS-2	<i>K_s</i>	18.77 ± 0.07	this paper
2017-08-27 23:10	10.44	Gemini-S	FLAMINGOS-2	<i>H</i>	19.63 ± 0.08	this paper
2017-08-27 23:16	10.44	Gemini-S	FLAMINGOS-2	<i>J</i>	21.33 ± 0.30	this paper
2017-08-27 23:18	10.44	CTIO1.3m	ANDICAM	<i>K</i>	18.91 ± 0.19	this paper
2017-08-28 16:40	11.17	<i>Swift</i>	UVOT	<i>B</i>	> 20.48	(11)
2017-08-28 16:44	11.17	<i>Swift</i>	UVOT	UVW2	> 24.32	(11)
2017-08-28 16:47	11.17	<i>Swift</i>	UVOT	<i>V</i>	> 20.07	(11)
2017-08-28 16:50	11.17	<i>Swift</i>	UVOT	UVM2	> 23.29	(11)
2017-08-28 16:52	11.17	IRSF	SIRIUS	<i>J</i>	> 18.37	this paper
2017-08-28 16:52	11.17	IRSF	SIRIUS	<i>K_s</i>	> 18.48	this paper
2017-08-28 16:52	11.17	IRSF	SIRIUS	<i>H</i>	> 18.43	this paper
2017-08-28 17:21	11.20	<i>Swift</i>	UVOT	<i>U</i>	> 21.44	(11)
2017-08-28 23:17	11.44	CTIO1.3m	ANDICAM	<i>K</i>	> 19.11	this paper
2017-08-28 23:35	11.45	Gemini-S	FLAMINGOS-2	<i>K_s</i>	19.41 ± 0.09	this paper
2017-08-28 23:40	11.46	Gemini-S	FLAMINGOS-2	<i>H</i>	> 20.63	this paper
2017-08-28 23:45	11.46	Gemini-S	FLAMINGOS-2	<i>J</i>	> 21.07	this paper
2017-08-29 00:36	11.50	<i>HST</i>	WFC3/UVIS	F225W	> 26.04	this paper
2017-08-29 00:36	11.50	<i>HST</i>	WFC3/UVIS	F336W	> 26.37	this paper
2017-08-29 00:36	11.50	<i>HST</i>	WFC3/UVIS	F275W	> 26.13	this paper
2017-08-29 10:44	11.92	<i>Swift</i>	UVOT	UVW1	> 22.26	(11)
2017-08-29 23:10	12.44	Gemini-S	FLAMINGOS-2	<i>K_s</i>	19.44 ± 0.08	this paper
2017-08-29 23:23	12.45	Gemini-S	FLAMINGOS-2	<i>H</i>	20.99 ± 0.21	this paper
2017-08-29 23:41	12.46	Gemini-S	FLAMINGOS-2	<i>J</i>	> 21.55	this paper
2017-08-30 23:01	13.43	Gemini-S	FLAMINGOS-2	<i>K_s</i>	19.84 ± 0.09	this paper
2017-08-30 23:29	13.45	Gemini-S	FLAMINGOS-2	<i>H</i>	21.48 ± 0.30	this paper
2017-08-30 23:43	13.46	Gemini-S	FLAMINGOS-2	<i>J</i>	> 21.94	this paper
2017-08-31 23:03	14.43	Gemini-S	FLAMINGOS-2	<i>K_s</i>	20.06 ± 0.10	this paper
2017-08-31 23:18	14.44	VLT	VISIR	<i>J8.9</i>	> 7.74	this paper
2017-08-31 23:50	14.47	Gemini-S	FLAMINGOS-2	<i>H</i>	21.63 ± 0.36	this paper
2017-09-01 00:18	14.48	Gemini-S	GMOS	<i>i</i>	> 23.20	this paper
2017-09-01 23:18	15.44	VLT	VISIR	<i>J8.9</i>	> 7.57	this paper
2017-09-01 23:24	15.45	Gemini-S	FLAMINGOS-2	<i>K_s</i>	20.43 ± 0.13	this paper
2017-09-02 00:46	15.50	Gemini-S	GMOS	<i>i</i>	> 23.40	this paper
2017-09-02 23:22	16.45	Gemini-S	FLAMINGOS-2	<i>K_s</i>	20.95 ± 0.18	this paper

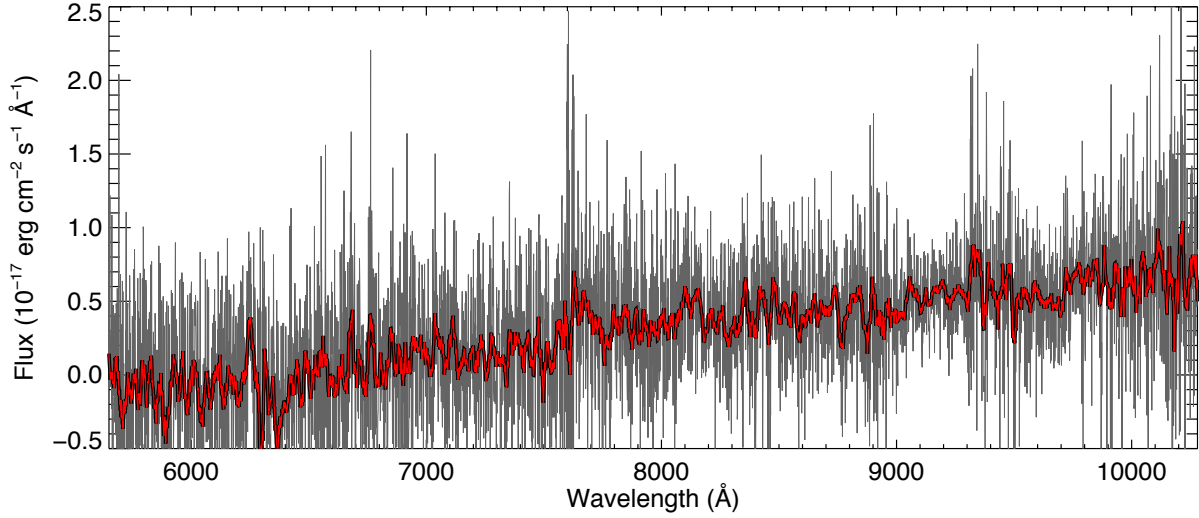


Figure S2: Optical spectrum of EM170817 taken 2017 August 25 with the Low Resolution Imaging Spectrometer on Keck I. The measured spectrum is shown in gray, and a version smoothed with a kernel of width 20 Å is shown in red. EM170817 was already quite faint at this time and no unambiguous features are evident.

Table S1: Archival and new ultraviolet, optical, and near-infrared photometry of EM170817 (continued).

Observation Date (UTC)	Δt (d)	Telescope	Instrument	Filter	AB Magnitude	Reference
2017-09-03 00:03	16.47	Gemini-S	GMOS	r	> 21.18	this paper
2017-09-03 23:36	17.46	Gemini-S	FLAMINGOS-2	K_s	> 19.92	this paper
2017-09-04 00:16	17.48	Gemini-S	GMOS	r	> 21.98	this paper
2017-09-04 23:28	18.45	Gemini-S	FLAMINGOS-2	K_s	21.04 ± 0.09	this paper
2017-09-05 00:03	18.47	Gemini-S	GMOS	i	> 21.90	this paper
2017-09-05 23:48	19.46	Gemini-S	FLAMINGOS-2	K_s	21.23 ± 0.37	this paper
2017-09-06 23:30	20.45	Gemini-S	FLAMINGOS-2	H	> 21.22	this paper
2017-09-06 23:33	20.45	VLT	VISIR	$J8.9$	> 7.42	this paper
2017-09-07 23:39	21.46	Gemini-S	FLAMINGOS-2	K_s	> 21.48	this paper
2017-09-11 23:39	25.46	Gemini-S	FLAMINGOS-2	J	> 20.21	this paper
2017-09-14 23:14	28.44	Gemini-S	FLAMINGOS-2	K_s	> 19.96	this paper
2017-09-15 23:19	29.44	Gemini-S	FLAMINGOS-2	K_s	> 20.60	this paper

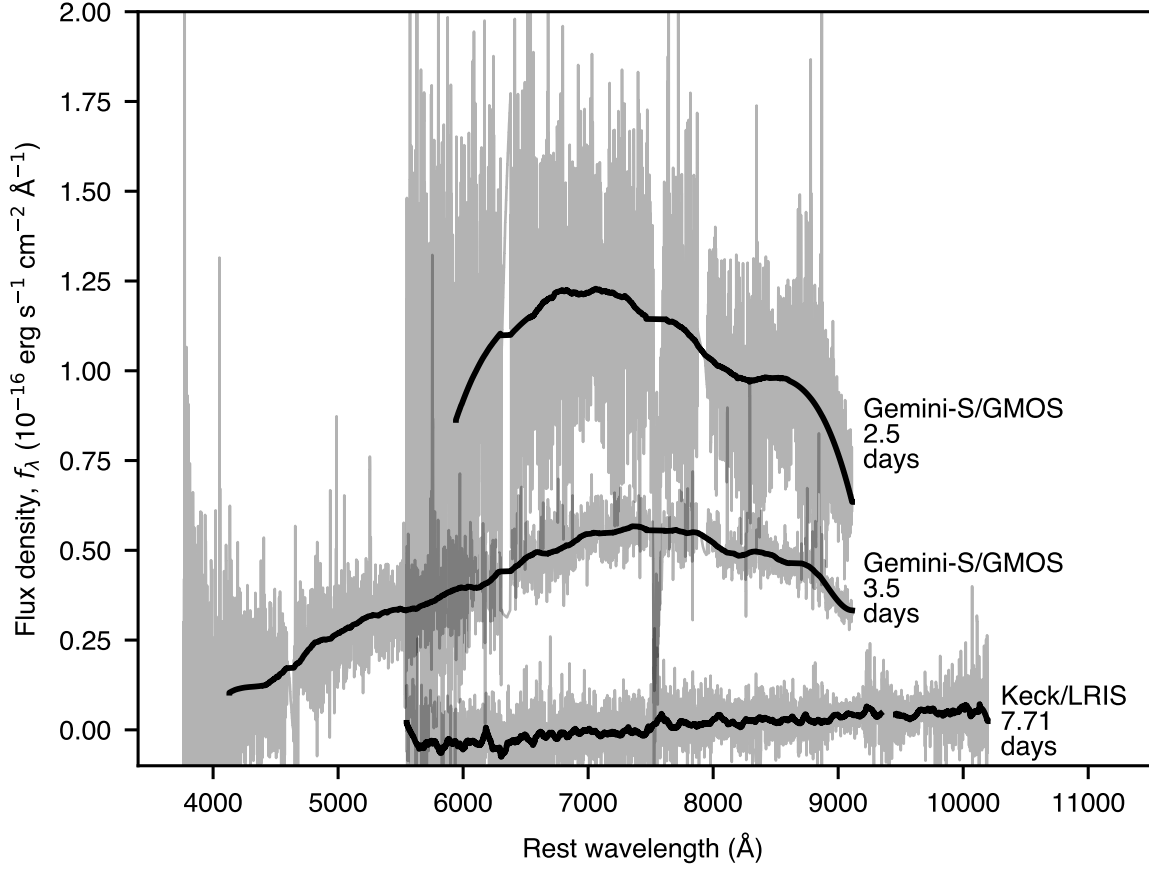


Figure S3: Optical spectral sequence of EM170817 including the Gemini-S/GMOS spectra from 2.5 and 3.5 days and the Keck/LRIS spectrum from 7.7 days. The measured spectra are shown in gray, and versions smoothed with a Savitsky-Golay filter are shown in black.

Table S2: Log of optical and near-IR spectroscopic observations of EM170817. For each observation we give the observation date, the time since GW170817, the telescope, instrument, exposure time, approximate wavelength range, and spectral resolution.

Observation Date (UTC)	Δt (days)	Telescope	Instrument	Exposure (s)	Wavelength Range (Å)	$\lambda/\Delta\lambda$
2017-08-20 01:08	2.52	Gemini-S	GMOS	2×300	6000–9000	1900
2017-08-21 00:15	3.48	Gemini-S	GMOS	4×360	3800–9200	1700
2017-08-22 00:21	4.49	Gemini-S	FLAMINGOS-2	8×150	12980–25070	600
2017-08-22 00:47	4.50	Gemini-S	FLAMINGOS-2	6×150	9840–18020	600
2017-08-25 05:45	7.71	Keck I	LRIS	$300 + 2 \times 600$	2000–10300	1000
2017-08-29 00:23	11.49	Gemini-S	FLAMINGOS-2	16×150	12980–25070	600

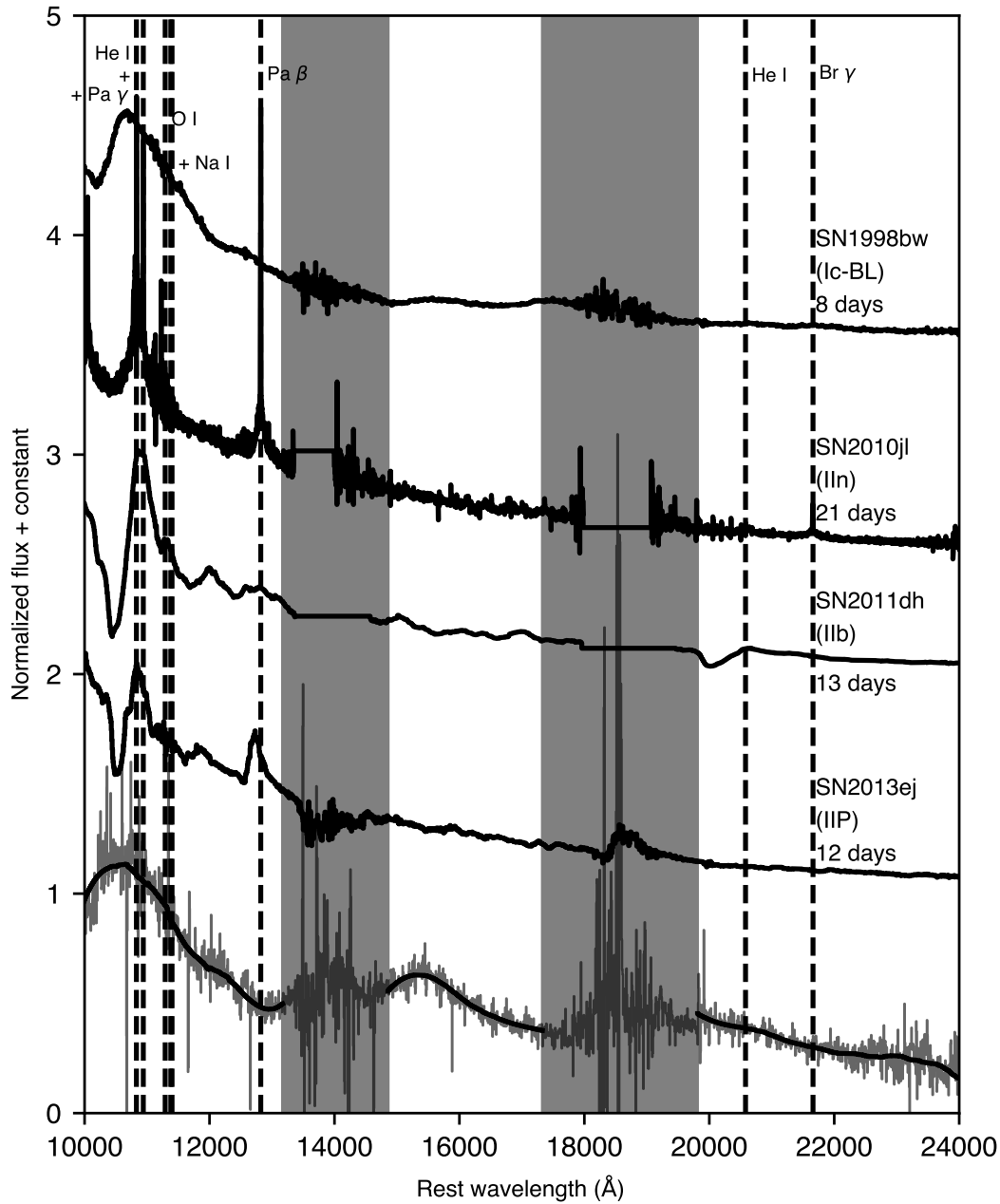


Figure S5: Near-infrared spectrum of EM170817 at $t = 4.5$ days post merger is shown at the bottom of the figure, along with the spectra of the type IIP SN 2013ej at 12 days (141), the type IIb SN 2011dh at 13 days (142), the type IIn SN 2010jl at 21 days (143), and the broad-lined type Ic (Ic-BL) SN 1998bw at 8 days post maximum (144). Each spectrum is normalized to the flux between 10800.0–10950 Å and shifted up from the one below for clarity. The spectrum of EM170817 was corrected for Milky Way reddening assuming $E(B - V) = 0.1$ and a standard $R_V = 3.1$ extinction law (140), and smoothed using a Savitzky–Golay filter to clearly show the prominent, broad spectral features at ~ 10600 and 15000 Å. The unfiltered data are shown in gray. Regions of low S/N due to the strong telluric absorption features between the J , H , and K spectral windows are indicated by the vertical, gray bars. We label several transitions commonly identified in the spectra of core-collapse SNe with vertical, dashed lines.

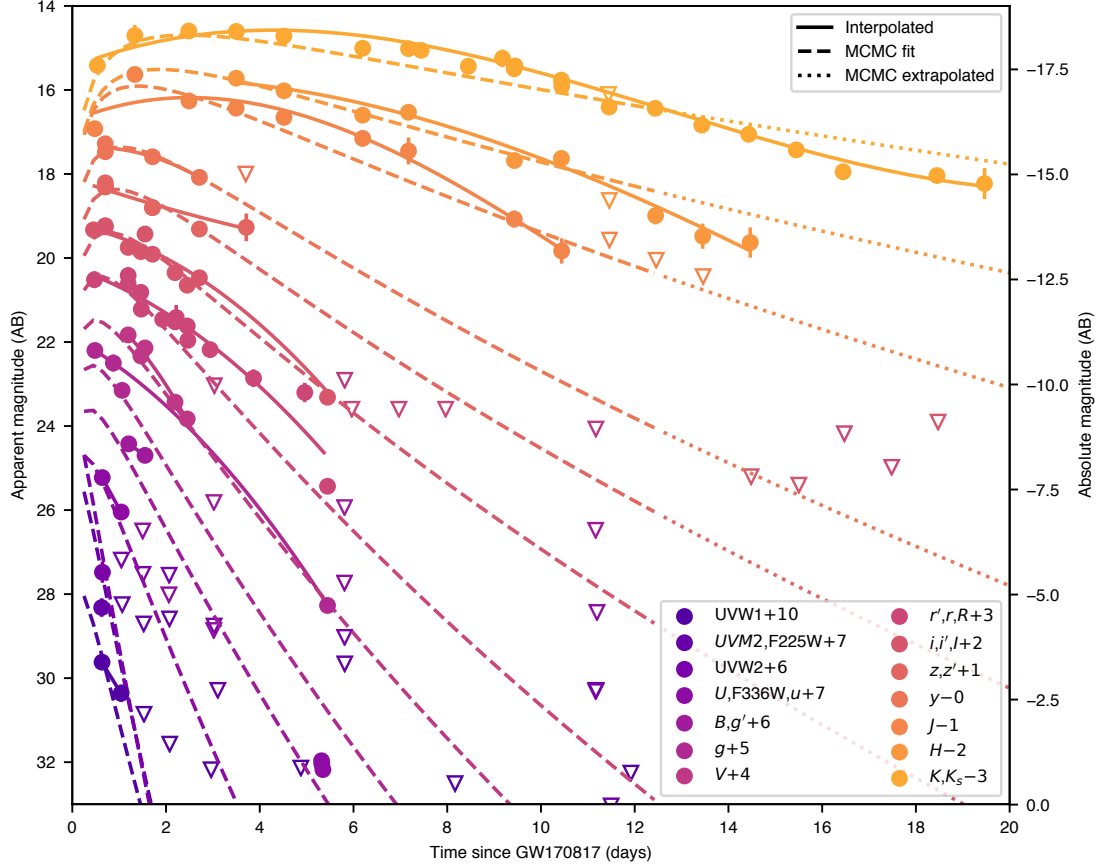


Figure S6: Multiwavelength lightcurve based on the ultraviolet/optical/infrared photometry of EM170817. The data are our assembled photometry (Table S1) plotted as AB magnitude vs. time since GW170817, with open triangles indicating 5σ upper limits, colored by wavelength. We plot both apparent magnitude and absolute magnitudes assuming distance of 40 Mpc. We illustrate both methods of blackbody fitting used here: the solid curves are the low-order interpolants used at each wavelength to fit a separate absorbed blackbody at every epoch, while the dashed curves are the evolving absorbed blackbodies fit simultaneously with a Markov-Chain Monte Carlo (MCMC) algorithm (the dotted portions are extrapolations). Filters with similar wavelengths (roughly within 300 \AA) have been grouped together for clarity, and some filters have been omitted.

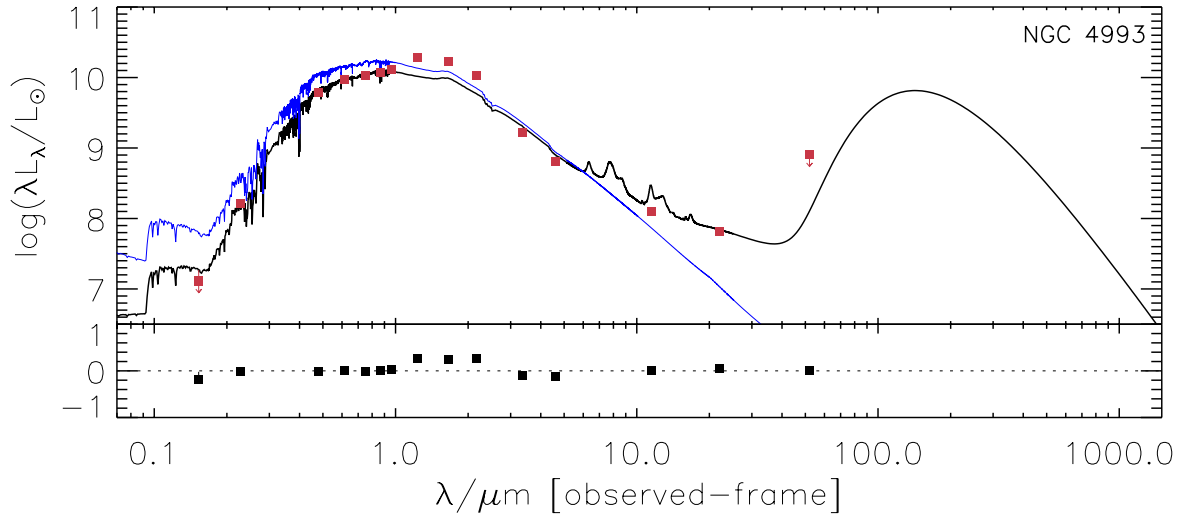


Figure S7: Spectral energy distribution obtained by combining photometric data of *GALEX*, Pan-STARRS, 2MASS, *WISE*, and *IRAS* surveys (red squares). The flux density was corrected for Galactic extinction before the fitting assuming $R_V = 3.1$ and $E(B - V) = 0.1$. We used upper limits for *GALEX*/FUV and *IRAS*/60 μm bands. The upper panel shows the unattenuated stellar spectrum (blue line) and the sum of attenuated stellar spectrum and the infrared emission (black line). The lower panel shows the residuals $(L_\lambda^{\text{obs}} - L_\lambda^{\text{model}})/L_\lambda^{\text{obs}}$ (black squares), where L_λ^{obs} and L_λ^{model} represent observed and predicted broad-band luminosity densities respectively.

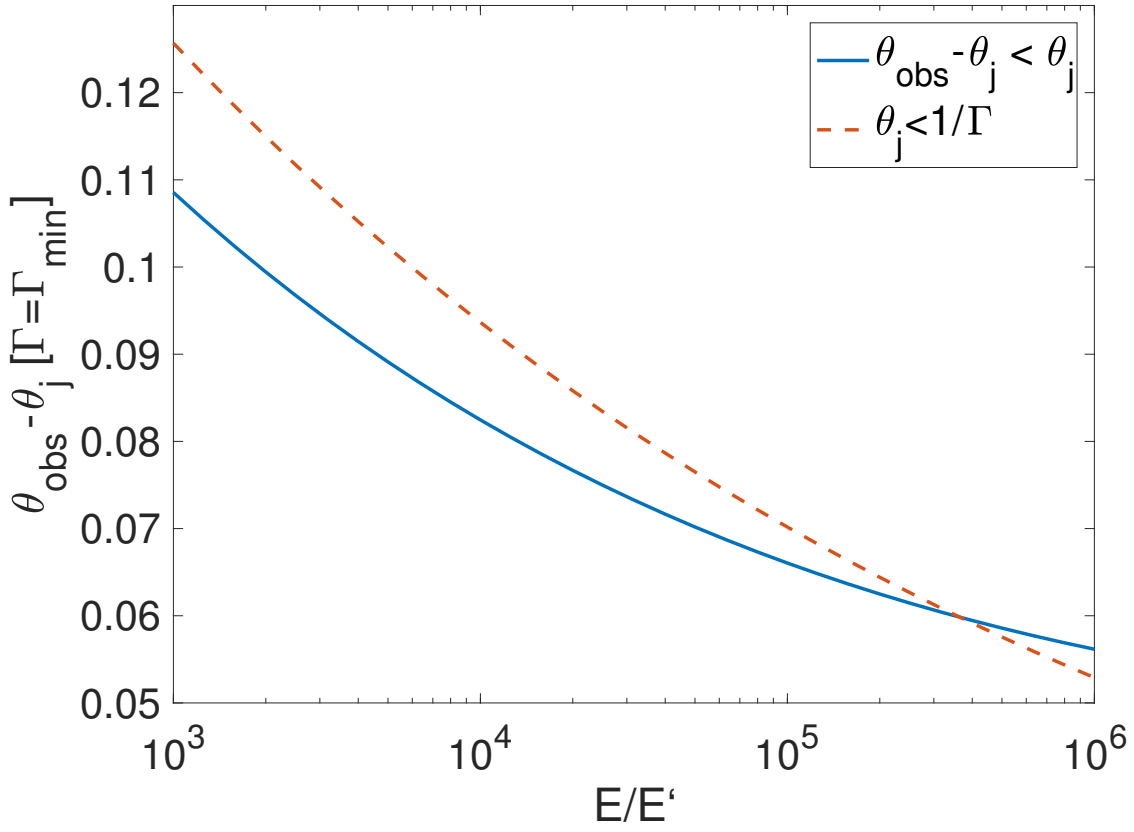


Figure S8: The maximal value of $\theta_{\text{obs}} - \theta_j$ as a function of the amplification parameter $A \equiv E/E'$ for observers far and close to the jet axes (cases (i) and (iii) in equation S2). The observed values of EM170817 that we used are photon energy $E'_p = 185$ keV and γ -ray spectral index $\alpha = -0.6$ (3, 4).

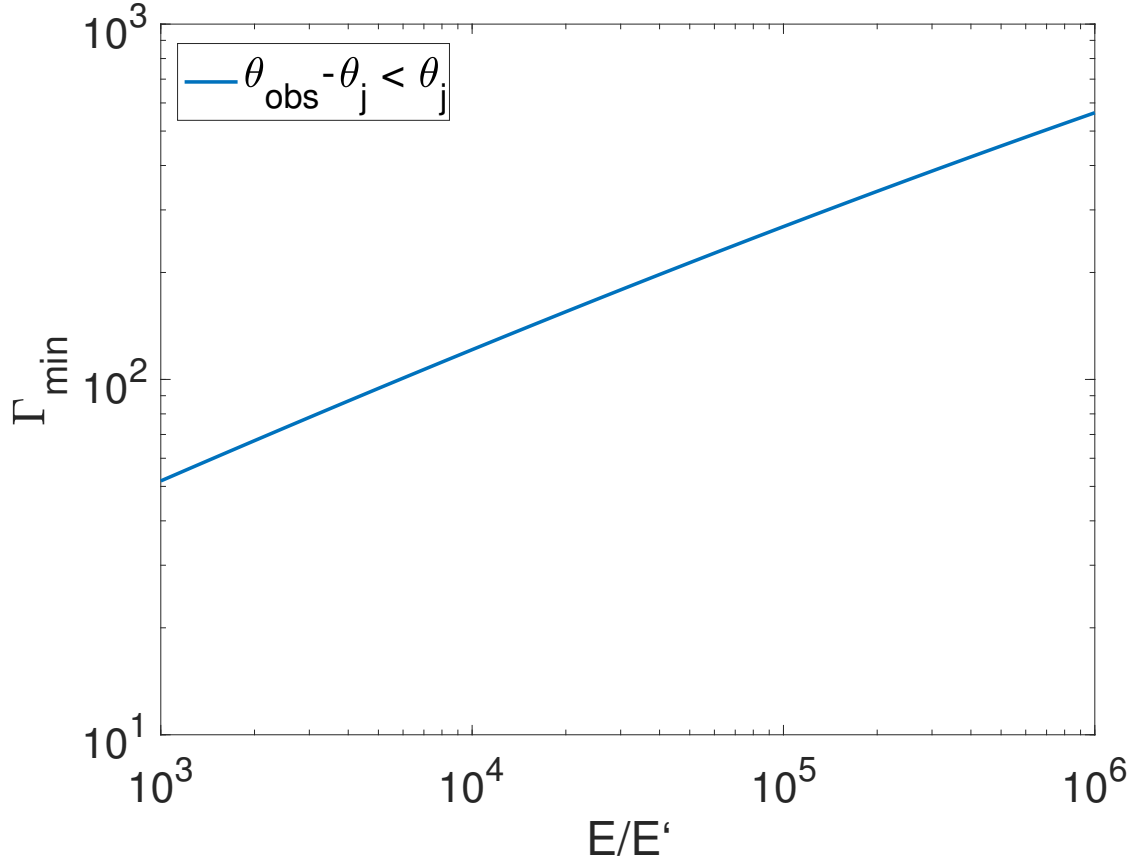


Figure S9: The minimal Lorentz factor of the jet, Γ_{\min} , required for the jet to be optically thin as a function of the amplification parameter $A \equiv E/E'$ for far off-axis observers, $\theta_{\text{obs}} - \theta_j \ll \theta_j$ (case (i) in equation S2). The parameters assumed here were the same as those assumed in figure S8: photon energy $E'_p = 185$ keV and γ -ray spectral index $\alpha = -0.6$ (3, 4).

Table S3: Census of the Local Universe (CLU) galaxies within the localization volume of GW170817 (84). For each galaxy we give the coordinates, distance, far-ultraviolet (FUV) magnitude from *GALEX*, mid-infrared magnitudes from *WISE*, estimated star-formation rate (SFR) based on the FUV magnitude, estimated stellar mass based on the mid-infrared magnitudes, and probability within the GW170817 localization volume.

Galaxy	RA ^a (deg)	DEC ^a (deg)	D (Mpc)	FUV (AB)	WISE1 (Vega)	WISE4 (Vega)	log ₁₀ (SFR) (M _⊙ yr ⁻¹)	log ₁₀ (M _★) (M _⊙)	Prob.
NGC 4970	196.8906	-24.0086	46.50	...	9.78	8.01	...	10.42	0.68
NGC 4830	194.3663	-19.6913	47.90	18.88	9.87	8.34	-1.32	10.41	0.75
NGC 4993	197.4487	-23.3839	41.66	20.13	9.94	7.47	-1.35	10.26	0.41
NGC 4968	196.7749	-23.6770	42.24	18.93	9.99	2.41	0.63	10.25	0.51
IC 4197	197.0180	-23.7969	43.24	...	10.07	7.45	...	10.24	0.48
IC 4180	196.7354	-23.9171	42.46	18.05	10.19	5.62	-0.58	10.17	0.60
ESO 508-G 033	199.0969	-26.5614	45.59	17.02	10.90	3.70	0.21	9.95	0.83
MCG -02-33-036	193.1066	-15.5172	53.87	19.81	11.50	7.47	-1.11	9.86	0.88
ESO 508-G 010	196.9080	-23.5790	43.04	...	11.88	5.97	...	9.51	0.44
MCG -03-33-023	194.2521	-17.3202	56.79	...	12.93	6.37	...	9.33	0.90
ESO 575-G 053	196.2705	-22.3839	36.37	16.46	11.98	6.47	-0.68	9.33	0.23
2MASX J12525109-1529300	193.2130	-15.4916	52.26	...	12.80	8.55	...	9.31	0.84
2MASX J12505229-1454238	192.7180	-14.9066	52.96	17.92	12.89	7.10	-0.79	9.29	0.89
2MASX J12573271-1942006	194.3863	-19.7002	52.39	20.65	12.96	9.18	-1.73	9.25	0.87
ESO 576-G 003	197.6488	-21.7482	42.04	...	12.65	6.59	...	9.18	0.89
UGCA 331	197.6914	-23.8657	40.82	...	12.61	7.33	...	9.17	0.47
IC 3825	192.6544	-14.4828	51.04	18.24	13.10	7.33	-0.93	9.17	0.87
ESO 575-G 055	196.6663	-22.4561	44.49	17.11	13.04	7.29	-0.79	9.07	0.32
ESO 508-G 003	196.6000	-24.1641	40.52	16.93	12.86	6.89	-0.77	9.06	0.73
ESO 508-G 019	197.4663	-24.2391	41.79	...	13.13	6.66	...	8.98	0.47
ESO 575-G 029	193.9986	-19.2691	45.21	...	13.36	7.96	...	8.96	0.78
2MASX J13073768-2356181	196.9071	-23.9384	49.73	...	13.66	8.44	...	8.92	0.75
2MFGC 10461	197.1774	-23.7756	41.39	...	13.32	8.61	...	8.90	0.40
2MFGC 10484	197.4617	-24.2419	42.31	...	13.46	8.86	0.48
2MASX J13061939-2258491	196.5805	-22.9804	41.51	17.52	13.51	7.30	-0.96	8.83	0.35
UGCA 327	196.9370	-22.8579	37.29	...	13.33	7.02	...	8.81	0.24
GALEXASC J125520.46-170546.9	193.8364	-17.0966	56.69	18.39	14.58	8.31	-1.06	8.67	0.89
WINGS J125412.84-153523.6	193.5534	-15.5899	50.96	...	14.43	8.33	...	8.64	0.82
ESO 508-G 004	196.7177	-22.8405	41.37	16.59	14.05	8.54	-0.78	8.61	0.26
ESO 508-G 014	197.1342	-23.3469	46.61	18.44	14.32	8.83	-1.31	8.60	0.50

^a Positions are J2000.

Table S3: Census of the Local Universe (CLU) galaxies within the localization volume of GW170817 (84), continued.

Galaxy	RA ^a (deg)	DEC ^a (deg)	D (Mpc)	FUV (AB)	WISE1 (Vega)	WISE4 (Vega)	log ₁₀ (SFR) (FUV) (M _⊙ yr ⁻¹)	log ₁₀ (M _*) (M _⊙)	Prob.
6dF J1254495–160308	193.7063	−16.0523	48.02	...	14.60	8.60	...	8.52	0.64
GALEXASC J125811.97–210246.3	194.5501	−21.0461	43.89	17.69	14.51	8.86	−1.13	8.47	0.90
GALEXASC J130525.30–233008.8	196.3546	−23.5025	45.90	17.44	14.73	7.16	−0.83	8.43	0.76
GALEXASC J125259.36–152150.9	193.2474	−15.3639	49.87	18.44	14.96	8.63	−1.23	8.41	0.78
GALEXASC J125301.39–151007.7	193.2552	−15.1693	53.40	20.94	15.25	8.93	−1.67	8.35	0.90
PGC45429	196.7822	−24.1104	41.50	...	14.82	9.12	...	8.30	0.65
6dF J1305235–233121	196.3478	−23.5224	41.71	17.31	14.90	8.41	−1.02	8.28	0.68
UGCA 325	196.7796	−24.1119	42.70	...	15.05	8.24	0.67
GALEXASC J130415.26–225251.3	196.0633	−22.8814	41.23	18.41	15.05	8.72	−1.40	8.20	0.57
6dF J1309177–242256	197.3241	−24.3821	40.36	...	15.23	7.34	...	8.12	0.49
UGCA 328	197.3298	−24.3866	41.03	...	15.27	8.31	...	8.11	0.50
GALEXASC J125157.02–160617.8	192.9872	−16.1047	50.30	21.04	15.85	8.20	−1.49	8.06	0.76
ESO 508–G 035	199.4497	−26.9025	37.77	17.95	15.33	9.19	−1.37	8.02	0.85
PGC45611	197.3286	−24.3846	39.81	15.87	15.55	8.29	−0.54	7.98	0.49
ABELL 1664_11:[PSE2006] 2506	196.8922	−23.8153	42.80	21.49	15.83	9.09	−1.96	7.93	0.50
GALEXASC J131426.62–271242.6	198.6106	−27.2120	29.32	18.39	15.28	8.77	−1.69	7.82	0.89
ABELL 1631:[CZ2003]B0295[024]	192.8695	−15.8723	53.56	...	16.70	8.46	...	7.77	0.87
WINGS J125701.38–172325.2	194.2558	−17.3903	26.13	...	16.83	9.31	...	7.10	0.27
HIPASS J1255–15	193.8983	−15.0175	27.32	0.00	0.83

^a Positions are J2000.

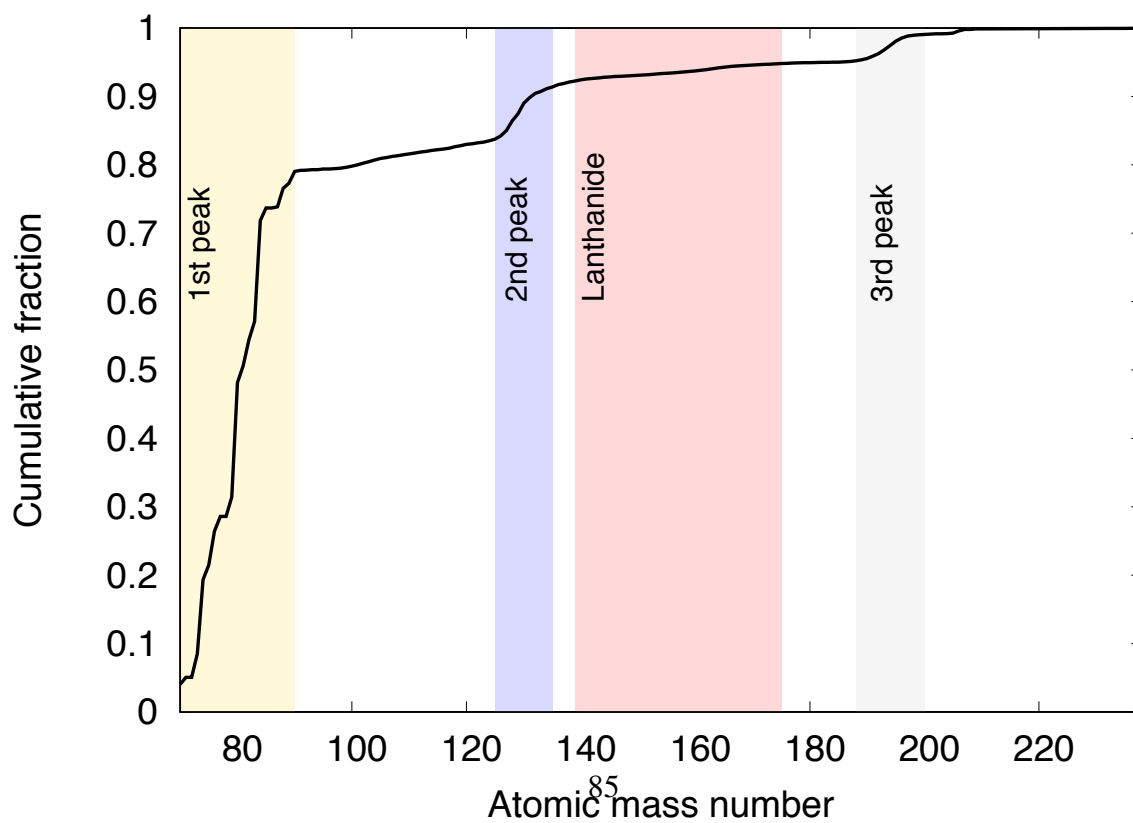
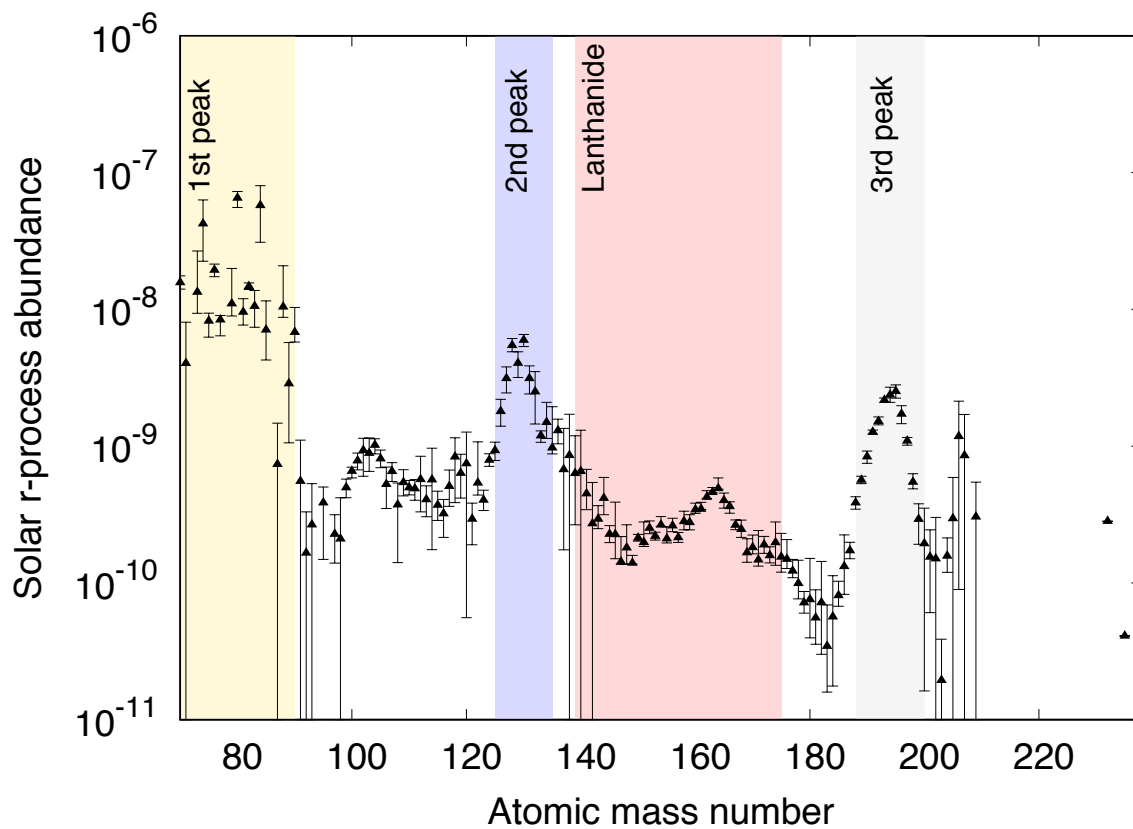


Figure S10: Top: the solar abundance pattern of r-process elements (*I45*). Bottom: their cumulative distribution.